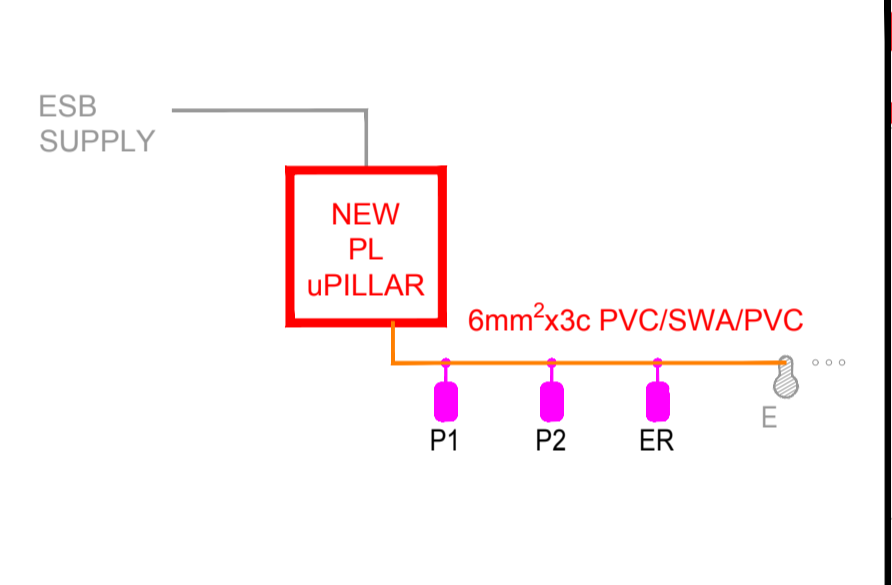


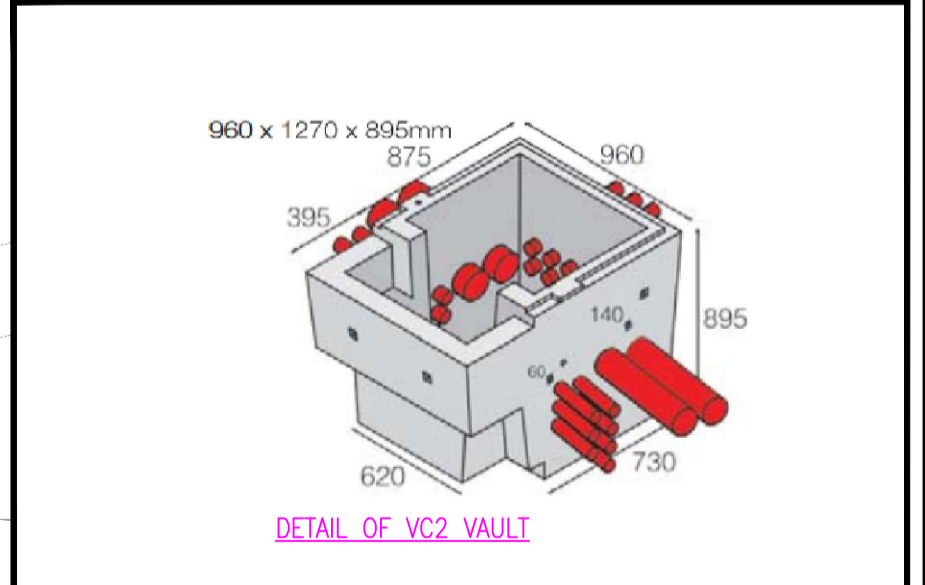
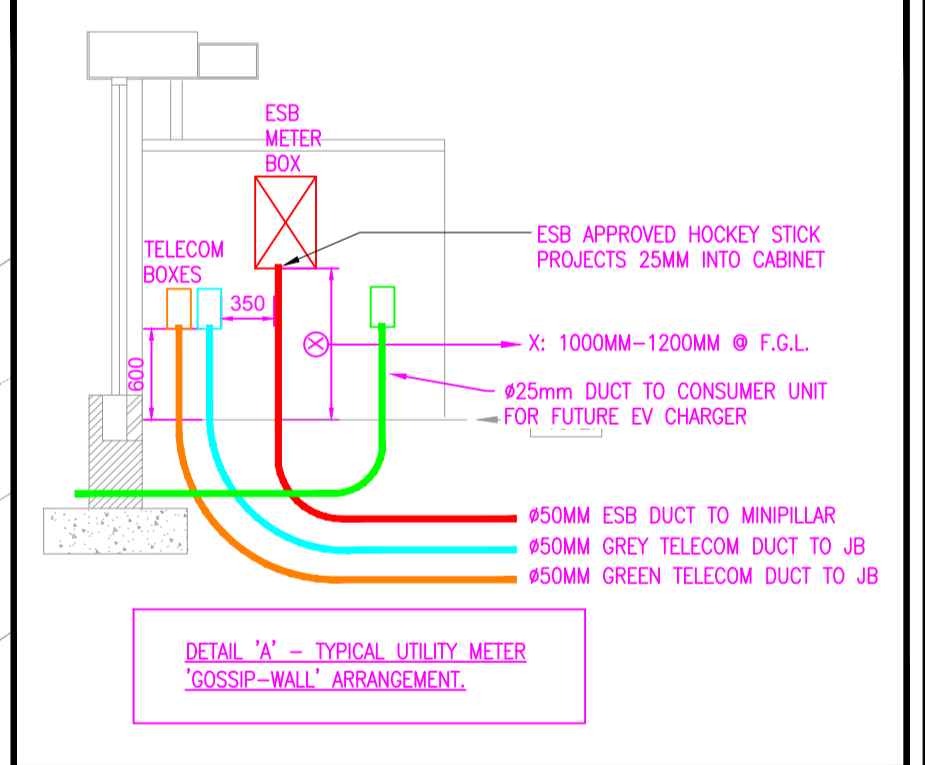
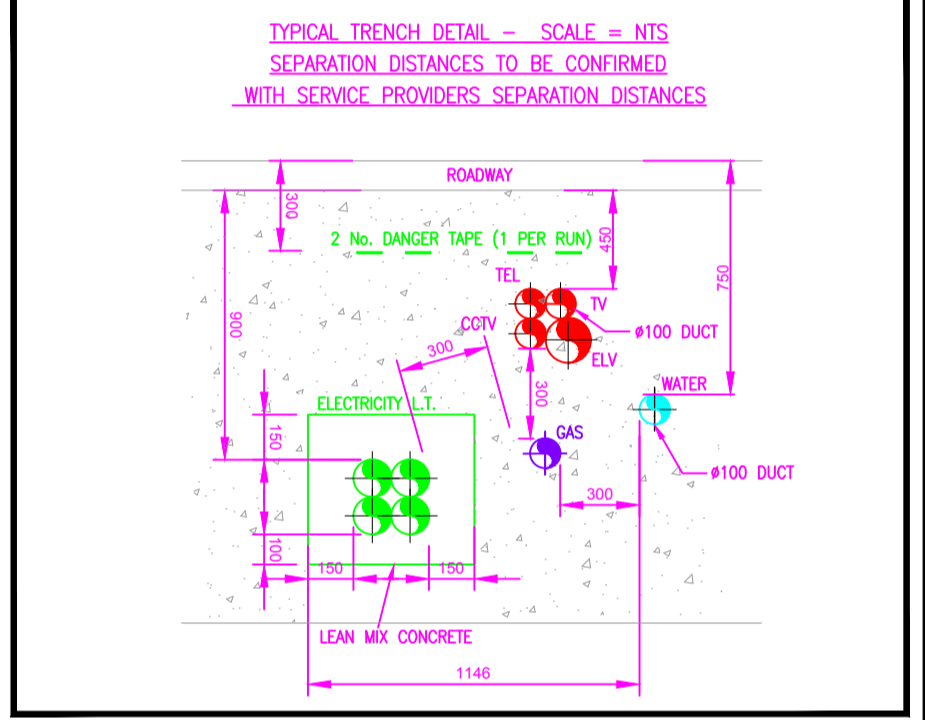
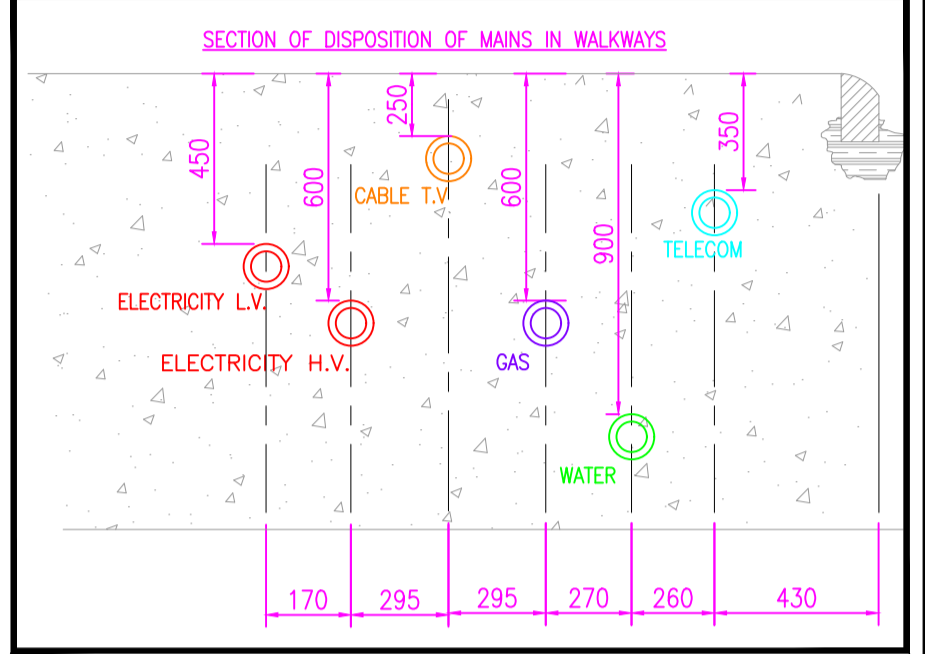
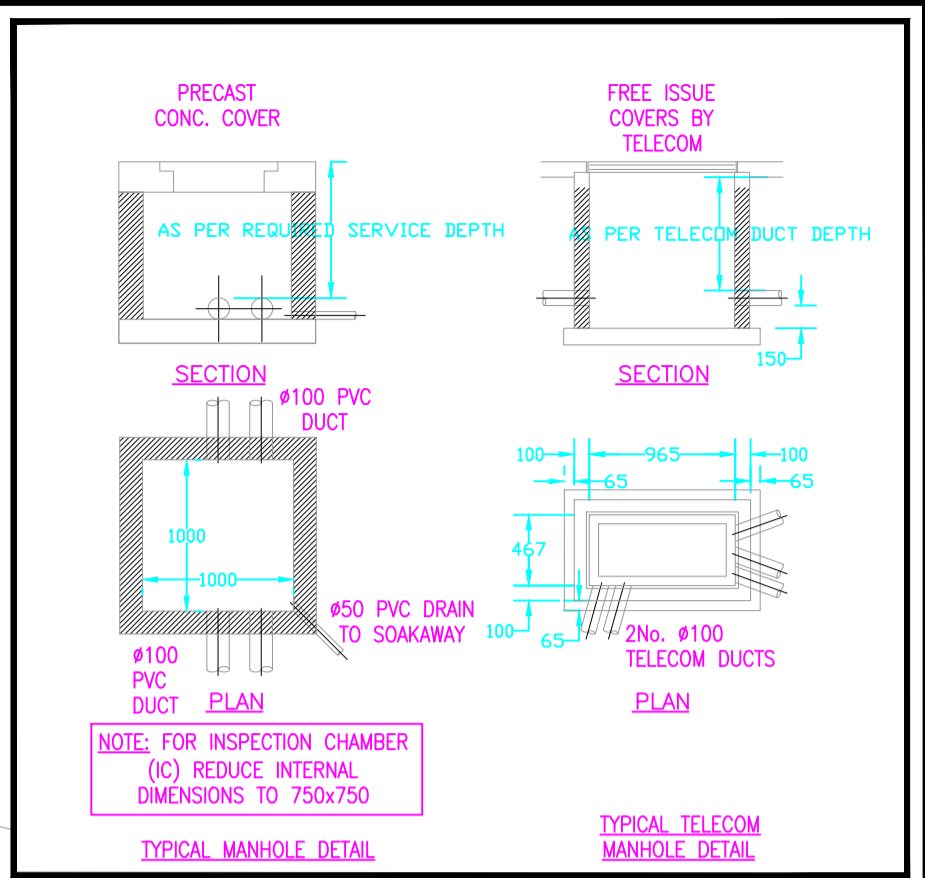


Possible connection
To Future Development Site



LEGEND

- ESB PROPOSED ESB LV LINE
- EXISTING ESB LINE
- MANHOLE FOR DRAWING WIRES, ACCESS AND MAINTENANCE.
- ESB MINIPILLAR "n", C/W VC2 VAULT IMMEDIATELY IN FRONT
- ø50mm RED DUCT TO MINIPILLAR "n"
- ESB METER BOX & TELECOM ETUs
- TELECOM GREY DUCTS ø110mm MAINS TO CHAMBERS AND ø50mm FROM CHAMBERS TO ETU'S
- EXISTING EIR DUCT
- TELECOM 1 JB "n"
- ø50mm GREY DUCT TO JB "n"
- PROPOSED PL DUCT
- EXISTING PL LINE
- EXISTING LUMINAIRE
- LED LANTERN, 22W, 3400lm, 4000K, DW50 DISTRIBUTION ON 6m POLE



A.3.4

PART 8

Referenced drawings

Dwg No.	Dwg Title

Issue register

Rev.	Date	Description	Dwn.	Chkd.	Appvd.
P1	28/04/20	PART 8	HP	BC	AW
P2	27/05/20	PART 8	HP	BC	AW

NOTES:

- THIS DRAWING TO BE READ IN CONJUNCTION WITH ALL RELEVANT ARCHITECTS, C&S ENGINEERS DRAWINGS & SPECIFICATIONS.
- ALL WORKS TO BE CARRIED OUT IN ACCORDANCE WITH THE RELEVANT BUILDING REGULATIONS.
- DO NOT SCALE - WORK TO FIGURE DIMENSIONS ONLY.



PROPOSED SITE SERVICES LAYOUT

Client: TIPPERARY COUNTY COUNCIL

Job Description: HOUSING UNITS AT DONOHILL, Co. TIPPERARY

Project No: 19ME017(A) Drawing Ref: ME-1000 Rev: P2

Date: 28/04/20 Scale: 1:200@A1 (1:400@A3)

Drawn By: H.P. Checked By: B.C. Approved By: A.W.

Client: TIPPERARY COUNTY COUNCIL

Job Description: HOUSING UNITS AT DONOHILL, Co. TIPPERARY

Project No: 19ME017(A) Drawing Ref: ME-1000 Rev: P2

Hayes Higgins Partnership

Gas House Lane, Kilkenny.

056 7764710 (056) 7723223 info@hayeshiggins.com