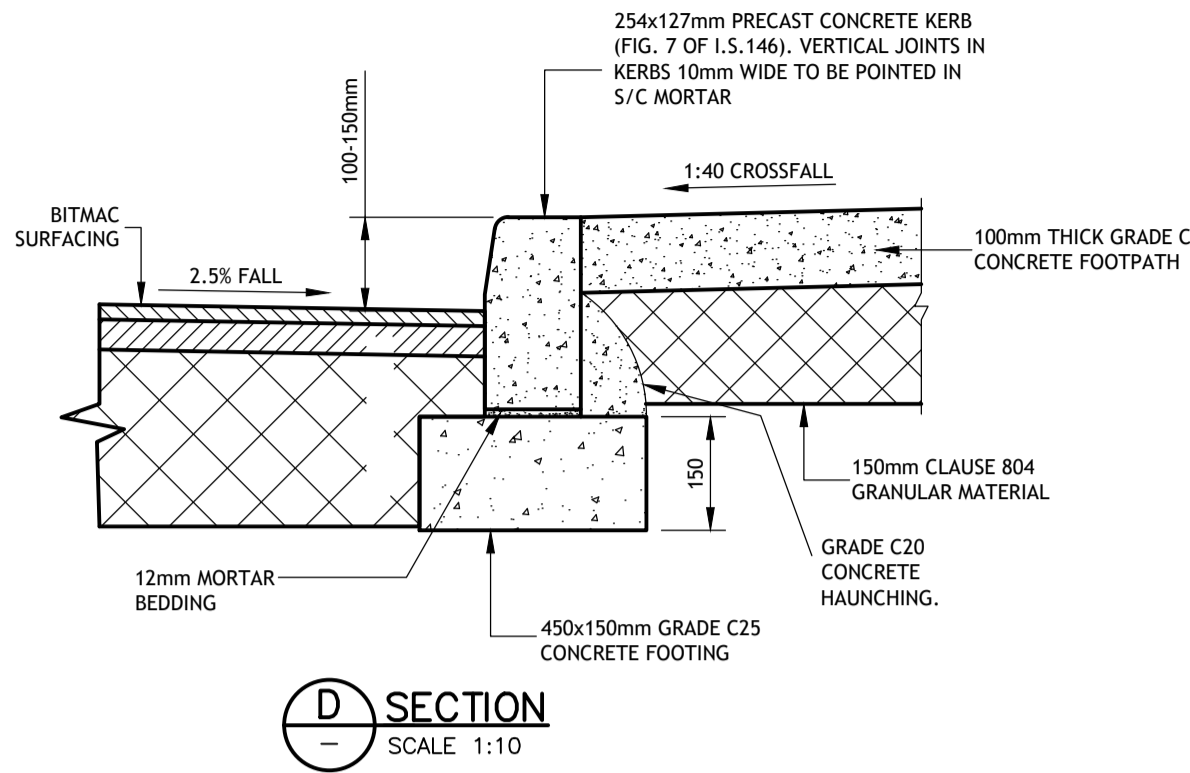
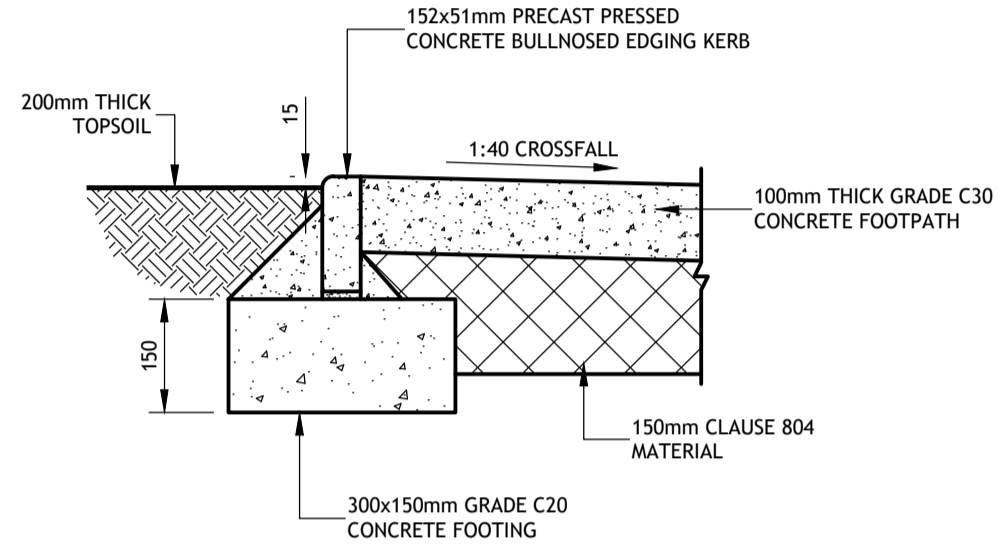


PLAN-FOOTPATH DETAILS
SCALE 1:20

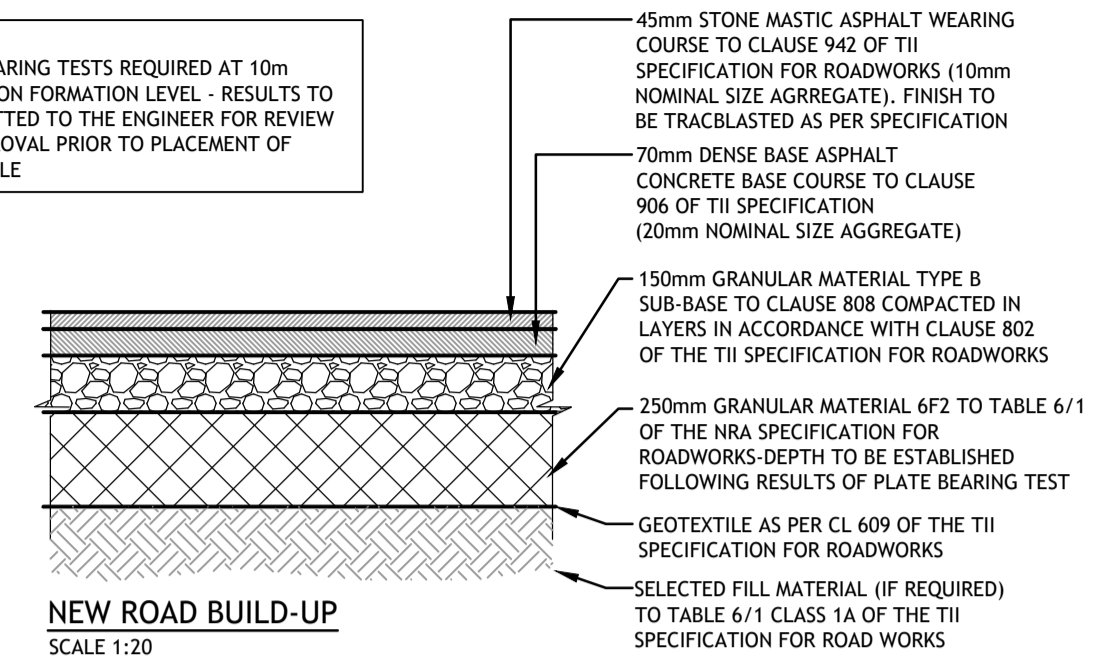


SECTION D
SCALE 1:10

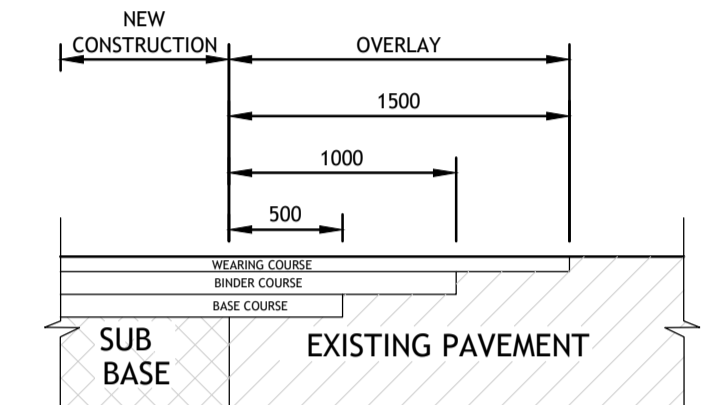


SECTION C
SCALE 1:10

NOTE: PLATE BEARING TESTS REQUIRED AT 10m CENTERS ON FORMATION LEVEL - RESULTS TO BE SUBMITTED TO THE ENGINEER FOR REVIEW AND APPROVAL PRIOR TO PLACEMENT OF GEOTEXTILE

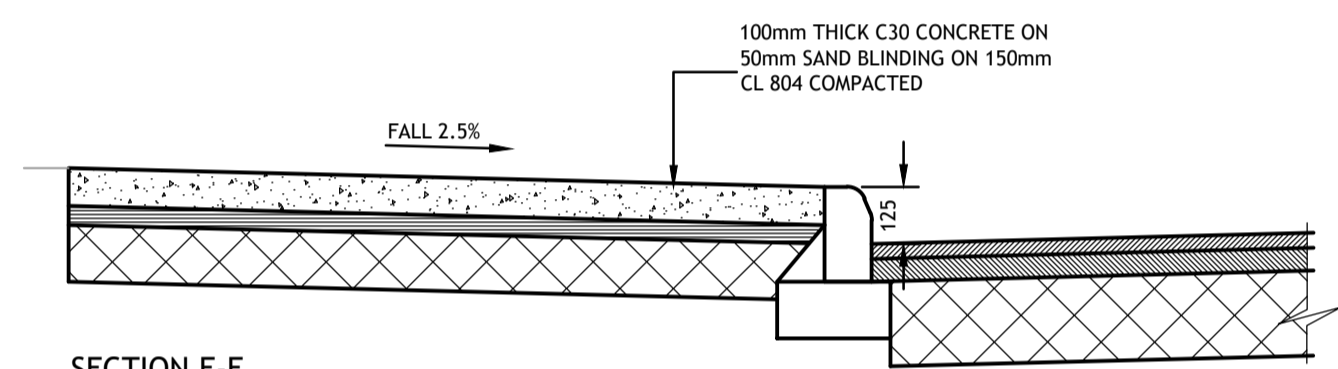


NEW ROAD BUILD-UP
SCALE 1:20

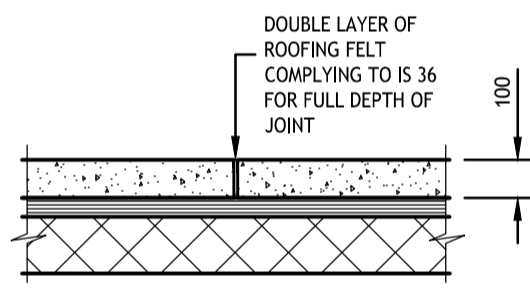


NOTE 100° C HOT BITUMEN BINDER 50 PEN OR COLD THROTROPIC BITUMEN 50-70 PEN TO BE APPLIED TO ALL VERTICAL CUTS IN ACCORDANCE WITH BS 594 PRIOR TO THE APPLICATION OF BITUMEN MACADAM. JOINTS TO BE SEALED WITH HOT BITUMEN. THE BITUMEN SEALANT SHALL NOT EXCEED 3mm DEPTH AND A WIDTH OF 40mm.

TRANSITION DETAIL
SCALE 1:20



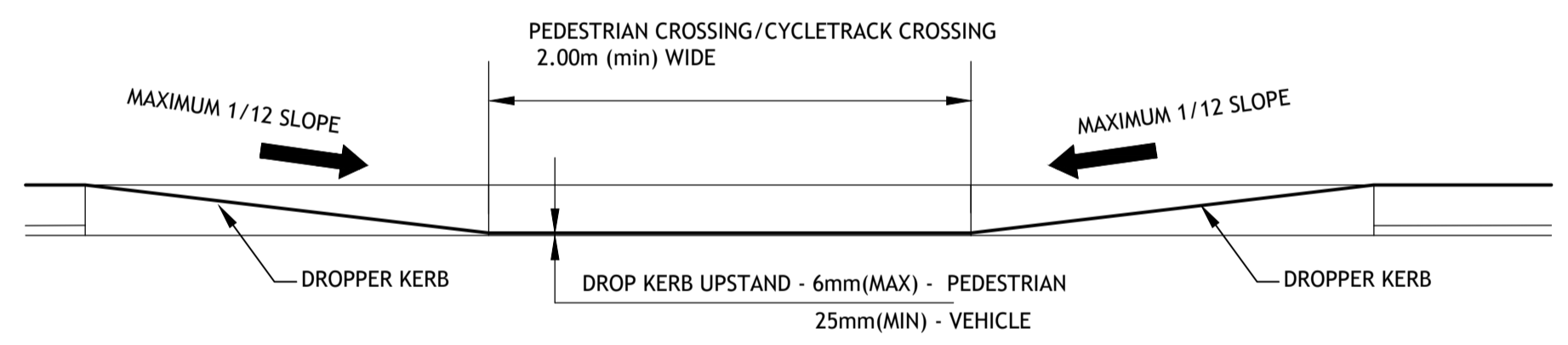
SECTION E-E
SCALE 1:20



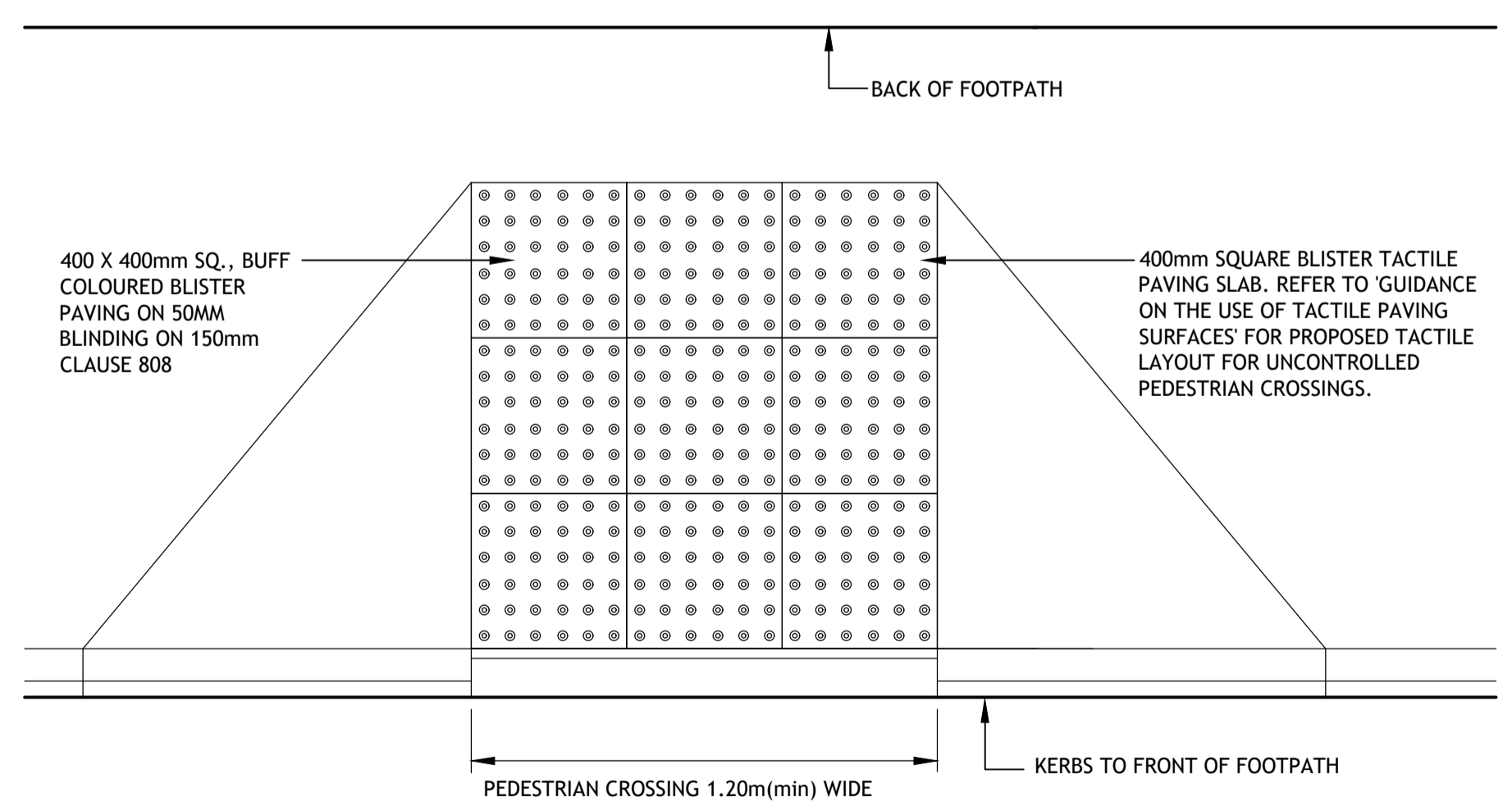
SECTION F-F (JOINT DETAIL)
SCALE 1:20

NOTES :

1. AT VEHICULAR ACCESS POINTS CONCRETE TO BE REINFORCED WITH A393 MESH TOP & BOTTOM
2. ALL CONCRETE EDGES AND JOINTS SHALL HAVE BULLNOSED TROWEL FINISH



TYPICAL ELEVATION OF DROPPED KERB
NOT TO SCALE



TYPICAL PLAN OF TACTILE PAVING AT DROP KERB
NOT TO SCALE