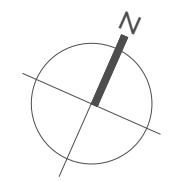


- GENERAL NOTES :**
- A. THIS DRAWING IS FOR PLANNING PURPOSES ONLY.
  - B. ALL DIMENSIONS ARE IN MILLIMETERS AND LEVELS METERS.
  - C. ALL DIMENSIONS ARE TO FACE OF BLOCK OR BRICK OR STUD TYPICALLY UNLESS NOTED OTHERWISE.
  - D. ALL HABITABLE ROOMS TO BE FITTED WITH PERMANENT VENTS IN ACCORDANCE WITH CURRENT BUILDING REGULATIONS
  - E. ALL WORKS TO BE CARRIED OUT IN ACCORDANCE WITH CURRENT BUILDING REGULATIONS



— SITE BOUNDARY

GROUND FLOOR	636.14m <sup>2</sup>
FIRST FLOOR	539.70m <sup>2</sup>
SECOND FLOOR	64.99m <sup>2</sup>
TOTAL GROSS	1,240.83m <sup>2</sup>


**CAR PARK REQUIREMENTS**  
(Offices 1 Space per 35m<sup>2</sup>)

REQUIRED	30 Spaces
PROPOSED	34 Spaces & 2 Electric Car Charging Spaces 2 Disabled Car Spaces
TOTAL	38 Spaces

REVISION	DATE	DETAILS	EC	DRAWN
-	06.07.2020	ISSUED FOR PART 8 APPLICATION		

**PART 8 APPLICATION**

DRAWING COPYRIGHT - HEALY & PARTNERS ARCHITECTS LTD  
FOUR DIMENSIONS ONLY TO BE USED  
DO NOT SCALE FROM DRAWING



HEALY  
PARTNERS  
ARCHITECTS

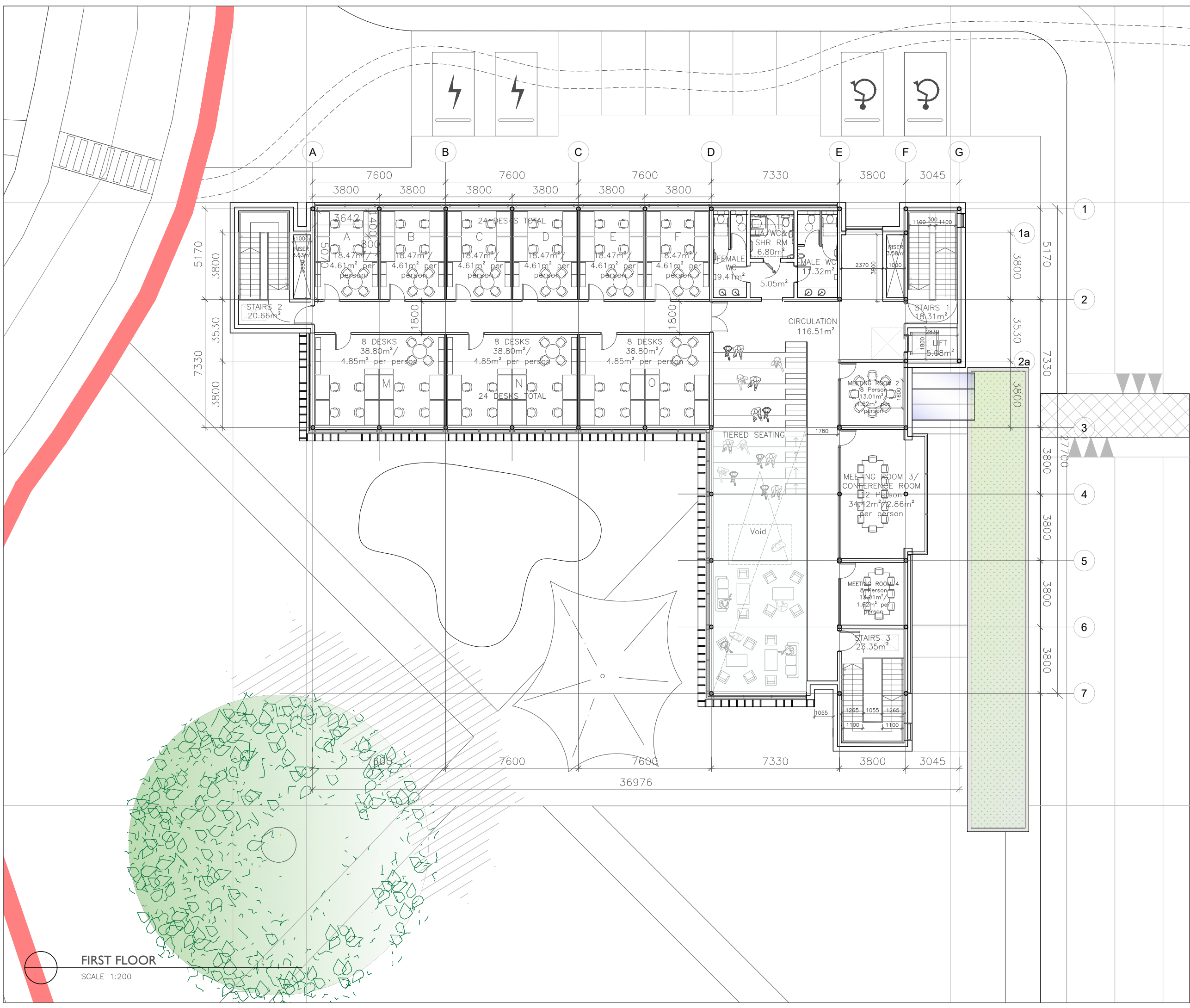
THE HILL, GLENTWORTH ST., LIMERICK,  
tel: +353 61 410966  
fax: +353 61 413679  
email: mail@healypartners.com

**TIPPERARY COUNTY COUNCIL**

PROJECT TITLE  
**NENAGH DIGITAL HUB**

DRAWING TITLE  
**PROPOSED FIRST FLOOR PLAN**

DRAWN	LG	CHK	DMC	PASS	DMC	REVISION
DATE	JULY '20	SCALE	1:200			
PROJECT NUMBER	19-125	DRAWING NUMBER	203			



**FIRST FLOOR**  
SCALE 1:200