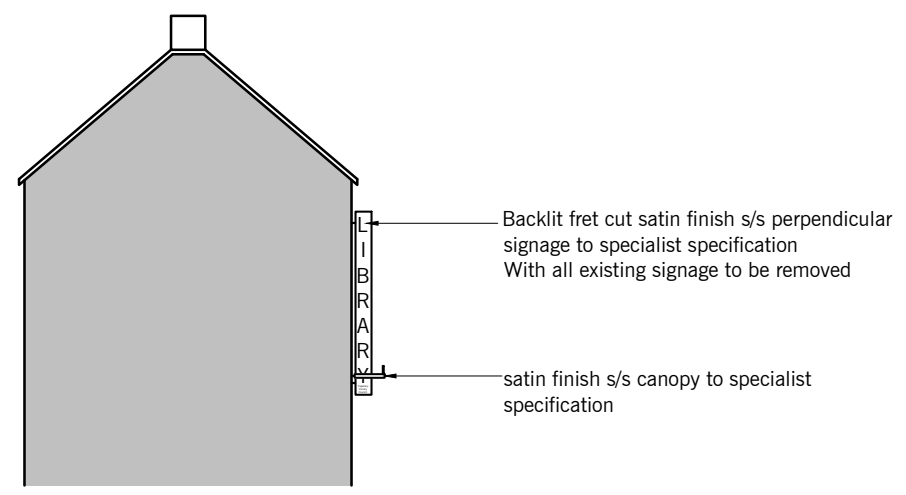
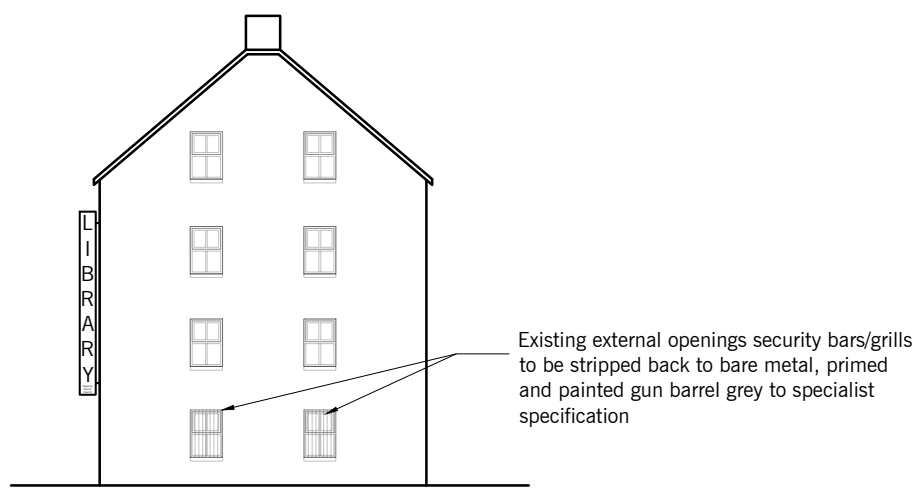


01 EAST ELEVATION-CHURCH STREET
212 1:200



02 SOUTH ELEVATION
212 1:200



03 NORTH ELEVATION
212 1:200



04 WEST ELEVATION
212 1:200

REVISION	DATE	DETAILS	DRAWN
-	-	-	-

SCHEME DESIGN

DRAWING COPYRIGHT - HEALY & PARTNERS ARCHITECTS LTD
FIGURED DIMENSIONS ONLY TO BE USED
DO NOT SCALE FROM DRAWING

HEALY PARTNERS ARCHITECTS

THE MILL, GLENTWORTH ST, LIMERICK,
tel + 353 61 41 0966
fax + 353 61 41 3079
email mail@healypartners.com

TIPPERARY COUNTY COUNCIL

PROJECT TITLE
CAHIR LIBRARY, CHANGE OF USE & BUILDING ALTERATIONS

DRAWING TITLE
CAHIR LIBRARY ELEVATIONS

DRAWN	CHK	PASS	REVISION
SO'D	SO'D	MH	
DATE	SCALE		
07.09.2020	AS SHOWN		
PROJECT NUMBER	DRAWING NUMBER		
19-148	19-148-212		