

Copyright: ©

No part of this document may be re-produced or transmitted in any form or stored in any retrieval system of any nature without the written permission of the consultant as copyright holder except as agreed for use on the project for which the document was originally written.

General notes:

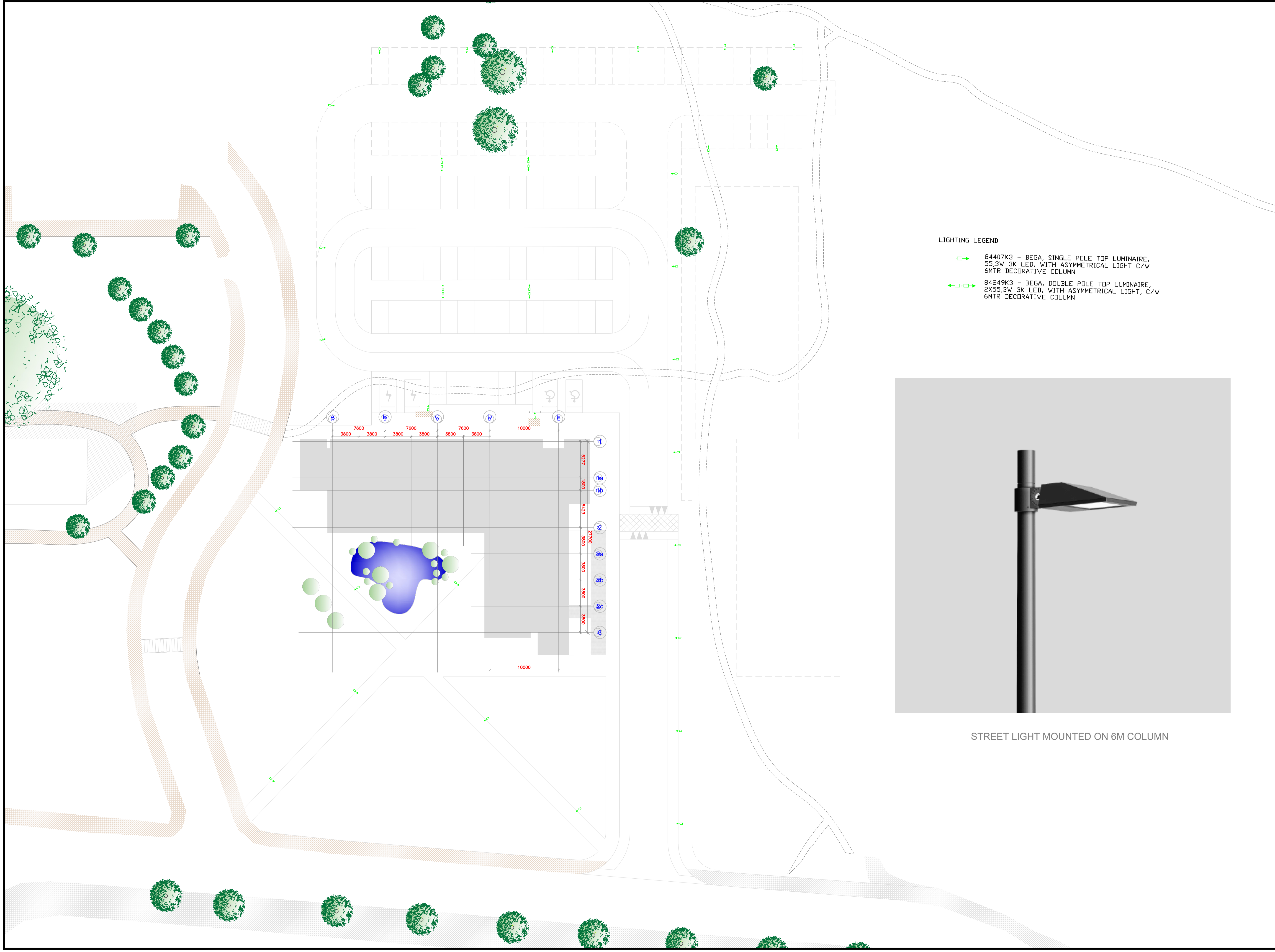
This drawing to be read in conjunction with all relevant architectural drawings and specifications.

This drawing to be read in conjunction with all relevant structural drawings and specifications.

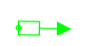

This drawing to be read in conjunction with all relevant mechanical and electrical drawings and specifications.

All dimensions in millimeters. do not scale from this drawing, only use figured dimensions only.

Contractor must verify all dimensions on site prior to installation of services and production of working drawings.



LIGHTING LEGEND

-  84407K3 - BEGA, SINGLE POLE TOP LUMINAIRE, 55,3W 3K LED, WITH ASYMMETRICAL LIGHT C/W 6MTR DECORATIVE COLUMN
-  84249K3 - BEGA, DOUBLE POLE TOP LUMINAIRE, 2X55,3W 3K LED, WITH ASYMMETRICAL LIGHT, C/W 6MTR DECORATIVE COLUMN



STREET LIGHT MOUNTED ON 6M COLUMN

P1	Issued for Planning	01/07/20
Rev	Description	Date

MOLONEYFOX
CONSULTING ENGINEERS
48 O'Connell Street, Limerick, T. 061277961
E. info@mfconsulting.ie | www.moloneyfoxconsulting.ie

Client: Tipperary County Council

Architect: Healy Architects
Mill House
Glentworth St., Limerick

Project: Proposed digital Hub
Nenagh
Co. Tipperary

Drawing: ELECTRICAL INSTALLATION
SITE LIGHTING

Proj Ref 19.1959	Dwg Ref PL-102	Scale 1:250 A1
Drawn JGM	Checked JM	Approved MF

Drawing Status:

<input type="checkbox"/> Preliminary	<input type="checkbox"/> For Approval	<input type="checkbox"/> Tender Issue
<input checked="" type="checkbox"/> For Information	<input type="checkbox"/> For Comment	<input type="checkbox"/> Contract Issue