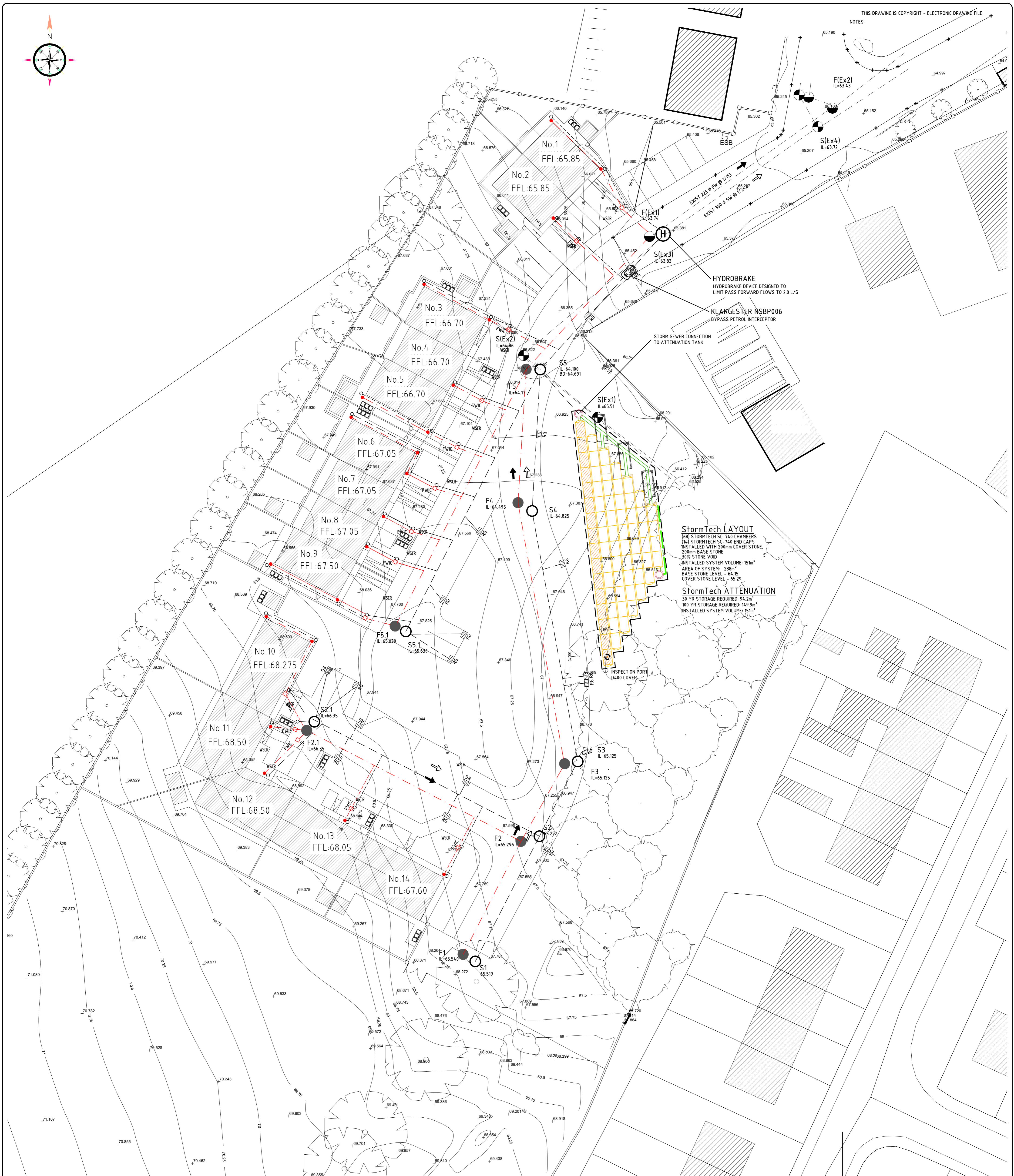


THIS DRAWING IS COPYRIGHT - ELECTRONIC DRAWING FILE



**StormTech LAYOUT**  
 (68) STORMTECH SC-740 CHAMBERS  
 (14) STORMTECH SC-740 END CAPS  
 INSTALLED WITH 200mm COVER STONE,  
 200mm BASE STONE  
 30% STONE VOID  
 INSTALLED SYSTEM VOLUME: 15m<sup>3</sup>  
 AREA OF SYSTEM: 288m<sup>2</sup>  
 BASE STONE LEVEL - 64.75  
 COVER STONE LEVEL - 65.29

**StormTech ATTENUATION**  
 30 YR STORAGE REQUIRED: 94.2m<sup>3</sup>  
 100 YR STORAGE REQUIRED: 149.9m<sup>3</sup>  
 INSTALLED SYSTEM VOLUME: 15m<sup>3</sup>

REV	DATE	DESCRIPTION	BY/CHKD/APPD

Client  
**TIPPERARY COUNTY COUNCIL**

**PHM Consulting**  
 Civil - Structural - Environmental  
 11 Mallow Street, Limerick, Ireland  
 Tel: +353 (0)61 576020 E-mail: info@phm.ie Web: www.phm.ie

**RESIDENTIAL DEVELOPMENT AT  
 BANSHA, CO. TIPPERARY  
 DRAINAGE LAYOUT**

**ROADS LEGEND**

- PROPOSED KERB LINE
- PROPOSED CENTRE LINE
- PROPOSED SIGHT LINE
- PROPOSED ROAD NO
- PROPOSED ROAD LEVEL
- PROPOSED FINISHED FLOOR LEVEL
- CENTRELINE CHAINAGE  
 40.000 = CHAINAGE (m)
- DROPPED KERBS
- TACTILE PAVING AT CROSSINGS  
 GREY OF BUFF BLISTER

**LINE MARKING**  
 L1 = 200MM THICK CONTINUOUS WHITE (RRM 017)  
 L2 = 100MM THICK CONTINUOUS WHITE (RRM 001)  
 L3 = 100MM THICK DOUBLE CONTINUOUS YELLOW (RRM 026)

STOP MARKING (M 114)  
 STOP SIGN (RUS 027)

ALL MARKINGS AND SIGNS TO BE IN ACCORDANCE WITH DoT TRAFFIC SIGNS MANUALS CHAPTERS 5, 7, & 10.

**DRAINAGE LEGEND**

- PROPOSED FOUL SEWER & MANHOLE
- PROPOSED STORM SEWER & MANHOLE
- PROPOSED COMBINED SEWER & MANHOLE
- PROPOSED ROAD GULLY
- EXISTING FOUL SEWER & MANHOLE
- EXISTING STORM SEWER & MANHOLE
- EXISTING COMBINED SEWER & MANHOLE
- LAND DRAIN & CATCHPIT
- RIISING MAIN
- PRIVATE STORM DRAIN
- PRIVATE FOUL DRAIN
- DIRECTION OF FOUL FLOW
- DIRECTION OF STORM FLOW

**WATERMAIN LEGEND**

- 100mm NOMINAL BORE
  - 150mm NOMINAL BORE
  - 200mm NOMINAL BORE
  - EXISTING WATERMAIN
  - SUIIICE VALVE
  - FIRE HYDRANT
  - AIR VALVE
  - THRUST BLOCK
  - 12mm PE NOMINAL BORE PRIVATE WATERMAIN WITH A TALBOT MATRIX BOUNDARY BOX
- NOTES:**  
 1. ALL HOUSE DRAINS TO BE 150mm Ø  
 2. LOCAL DRAINS TO RUN AT A GRADIENT OF 1/40 UNLESS OTHERWISE NOTED.  
 3. DOUBLE GULLIES TO BE PROVIDED AT ALL ROAD SAG CURVES & CUL DE SACS WHERE INDICATED. SEPARATE CONNECTIONS 150mm DIA. SHALL BE PROVIDED FOR EACH GULLY. NO GULLEY SHALL BE MORE THAN 10m FROM A SURFACE WATER CONNECTION.  
 4. HOUSE DRAINS SHALL NOT PASS THROUGH A PROPERTY THEY DO NOT SERVE.  
 5. MANHOLES ON HOUSE DRAIN RUNS SHALL BE LOCATED IN PRIVATE PROPERTY IN ALL CASES.  
 6. FOR SEWER LONG SECTIONS SEE DRAWING No. 139 SERIES  
 7. FOR ROAD CONSTRUCTION DETAILS SEE DRG. No. 151  
 8. FOR MANHOLE DETAILS SEE DRG. No. 152  
 9. FOR PIPE BEDDING DETAILS SEE DRG. No. 153  
 10. ALL PIPES WHICH ARE TO BE TAKEN IN CHARGE BY THE LOCAL AUTHORITY ARE TO BE CONCRETE PIPES COMPLYING WITH I.S. & I.S. 166 OR B.S. 5911.

Drawn	POR	Scale	1:250	Project Number	109-70	Rev.	~
Chd.	POR	Date	04/06/2020	Drawing Number	121		A1
Appd.	EOD	Status	DRAFT 04				