



**PUBLIC LIGHTING REPORT
PART 8 PLANNING
SUIR ISLAND GARDENS**

**Project: 2081
Issue: Part 8
Rev: B
Date: JUNE 2022**

Table of Contents:

1. Introduction..... 3
 2. Development Description 3
 3. Design Concept 3
 4. Proposed Luminaires:..... 6

Project Details:

Project: Suir Island Gardens, Clonmel, Co. Tipperary

Client: Tipperary County Council.

Landscape Architect: Dermot Foley Landscape Architects
 Argus House,
 Blackpitts,
 Dublin.

Engineers: PUNCH
 Carnegie House,
 Library Road,
 Dun Laoghaire,
 Co Dublin,

M&E Consultant: Fallon Design Ltd.
 Suite 4, No. 4 Riverwalk,
 Arklow,
 Co. Wicklow

Document Details:

Version	Title	Author
Rev B	Lighting Report	Fallon Design Ltd

Distribution Details:

Name	Method	Issue Date	Revision
Design Team	Email Copy	11.03.2022	A
Design Team	Email Copy	28.06.2022	B

1. Introduction

This part 8 planning application outlines the proposed lighting design intent for Suir Island House (a protected structure) and Suir Island Gardens, Oldbridge, Clonmel, Co. Tipperary. The area of proposed lighting highlighted on attached drawing is a small percentage of the overall scheme. The internal walkways are not proposed to be illuminated for the protection and development of the local ecology.

This report outlines the proposed lighting design intent to provide adequate illuminance to meet all regulations and requirements as follows:

- To provide illumination of Suir Island House (Protected Structure) from within to create a silhouette which shall emphasise the form of the structure.
- To provide adequate illumination to highlight the entrance at dusk and dawn, the park will be closed to the public at night.
- Minimise lighting pollution on surrounding areas and neighbours
- Reduce glare on pedestrians and other users of the access areas
- Use of efficient artificial lighting to reduce energy consumption
- Sensitively reduce any impact on the local ecology and wildlife, including the bats as referenced later in this report.

The proposed lighting is designed as decorative only and to provide an ambience for the occupants of the gardens, while highlighting the entrance and exit. The public lighting is not in accordance with any public lighting guidelines.

2. Development Description

The proposed public realm works on Suir Island comprises the development of approximately 0.9ha of public gardens and public landscaped areas. The works include:

- Renovation of existing gardens,
- Provision of lawns and landscape planting to include the provision of trees, hedges and shrubs,
- Seating and picnic areas,
- Hard and soft pathways,
- New entrance gate with adjoining wall cladding,
- Childrens play areas with associated equipment,
- Securing of Suir Island House (A Protected Structure) with decorative steel plates at ground floor level,
- Feature lighting to include internal and external lighting of Suir Island House (A Protected Structure),
- Signage,
- Ancillary site development works that shall include site drainage, provision of water supply for the play area and for wash down purposes, provision of electrical supply for the feature lighting, and removal and reconstruction of approximately 19 metres of boundary wall.
- All associated site and landscaping works

3. Design Concept

The design of the public lighting design shall include low energy LED lighting throughout. Energy efficient light fittings will reduce the developments energy consumption.

The selection of light fittings and their locations will be designed and selected to minimize the impact on the local ecology and wildlife. The proposed luminaires for the Gardens have been selected for an aesthetic look as they are primarily decorative.

The final luminaire selection at detail design stage shall aim to achieve the results seen in image 4.1 & 4.2 illumination the structure internally.

The illumination within the ruin structure will be cabled around the walls at high level to keep all the wiring and light fittings out of the floor plain. No nesting bats have been recorded in the old ruin so the illumination will not cause disruption.

Image 4.1

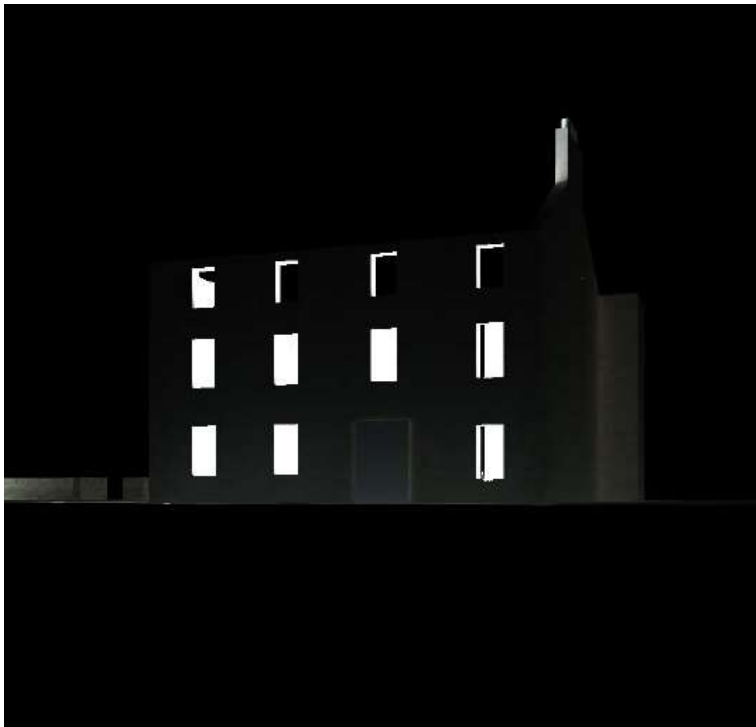


Image 4.2

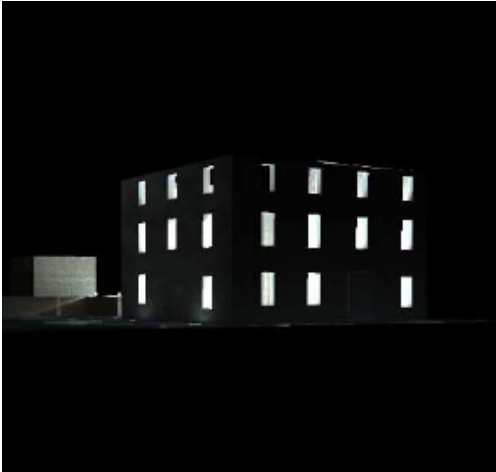


Image 4.3



4. Proposed Luminaires:

The following light fittings have been used for the generation of the 3D renders and the Part 8 design development of the Suir Island Gardens lighting.

Entrance Gate: Type A Fitting



Ruin Illumination: Type B Fitting

