

NOTES  
• OSI Map Ref: 5430-11

**LEGEND**

|  |  |   |  |   |   |                                   |  |
|--|--|---|--|---|---|-----------------------------------|--|
| Extents of Part VIII application (1.99 Ha)   | Small unit Natural Stone Paving (Buff/ Beige coloured) to back of Footway/ Building Line   | Natural Stone Kerbs in contrasting colour (Silver Grey)   | Asphalt surfacing to parking bays with coloured chippings (Red)  | Tactile paving (Red) to controlled pedestrian crossings                         | Feature plinth seat to top of low walling | Wayfinding sign location          | Proposed functional lighting column location                 |
| Semi-Mature tree planting within purpose built tree pits   | Small unit Natural Stone Paving (Grey/ Grey Blue coloured) to footways as contrasting coloured paved sections                                    | Sections of Natural Stone Kerb in dropped position, colour to match kerbs within scheme (Silver Grey) | Asphalt surfacing to carriageway with coloured chippings (Buff)  | Tactile Corduroy paving (Buff) as warning to top and bottom of steps            | Feature light column location             | Ground level brass sign location  | Proposed functional wall mounted light location              |
| Amenity planting areas to include grasses and perennials to provide year round interest          | Medium unit Natural Stone Paving (Grey / Grey Blue coloured) to trafficked areas and pedestrian crossings as contrasting coloured paved sections | Sections of Natural Stone Flush Trims Colour to match kerbs within scheme (Silver Grey)               | Coloured surfacing to delineate disabled parking bays. Colour to be blue with white line road markings | Granite feature seating incorporating amenity planting (Grasses and perennials) | Litter Bin location                       | Pop up Power supply unit location | SMART Bench location   |
| Large unit Natural Stone Paving (Buff/ Beige coloured) to Footways                               | Large unit Concrete Paving (Buff/ Beige coloured) to Footways  | Sections of Natural Stone Drainage Channels. Colour to match kerbs within scheme (Silver Grey)        | Raised pedestrian crossings  | Feature Seating Location  | Proposed Location for Cycle rack          | Feature railings                  | Potential location for temporary high tensile canopy / cover |
| Medium unit Natural Stone Paving (Buff/ Beige coloured) to trafficked areas and pedestrian areas | Medium unit Concrete Paving (Grey/ Blue Grey coloured) to trafficked areas as contrasting coloured paved section.                                | Asphalt surfacing to carriageways   | Tactile paving (Buff) to uncontrolled pedestrian crossings   | Feature Seating Location with amenity / perennial planting                      | Bollard location                          | Feature railings                  | New road markings (white lining) to lanes and parking bays   |
|  |  |   |  | Feature Seating Location  | Water re-fill station location            | Feature railings                  |  |

Client

Comhairle Contae Thiobraid Árann  
Tipperary County Council

**General Notes**

(i) Hard copies, dwf and pdf will form a controlled issue of the drawing. All other formats (dwg etc.) are deemed to be an uncontrolled issue and any work carried out based on these files is at the recipients own risk. RPS will not accept any responsibility for any errors from the use of these files, either by human error by the recipient, listing of the un-dimensioned measurements, compatibility with the recipients software, and any errors arising when these files are used to aid the recipients drawing production, or setting out on site.

(ii) DO NOT SCALE, use figured dimensions only.

(iii) This drawing is the property of RPS, it is a project confidential classified document. It must not be copied used or its contents divulged without prior written consent. The needs and expectations of client and RPS must be considered when working with this drawing.

(iv) Information including topographical survey, geotechnical investigation and utility detail used in the design have been provided by others.

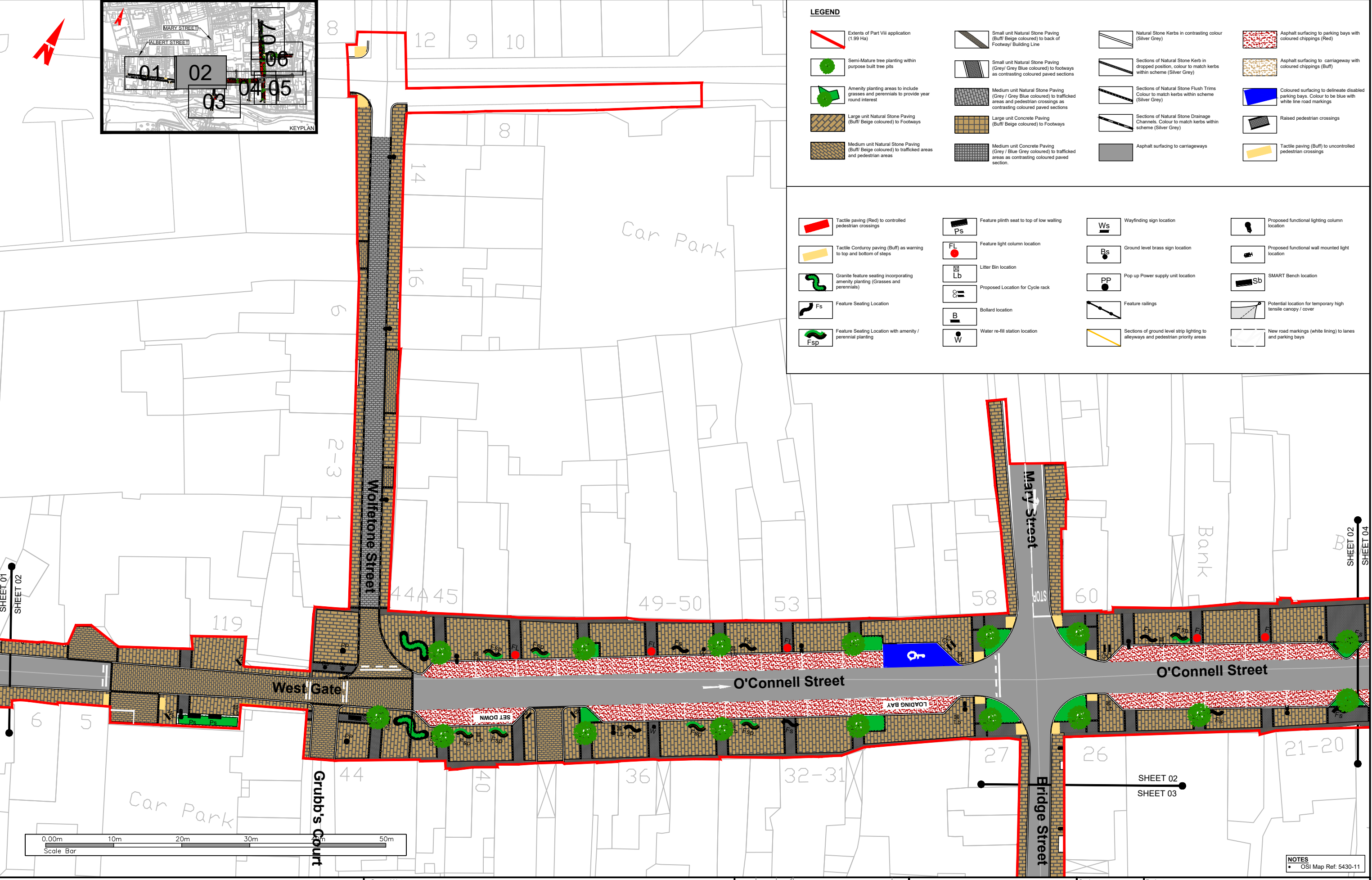
(v) All Levels refer to Ordnance Survey Datum, Malin Head.

|     |         |               |                       |     |
|-----|---------|---------------|-----------------------|-----|
| Rev | Date    | Drawn/Checked | Amendment / Issue     | App |
| P03 | Jul. 20 | SK/PH         | Part VIII Application | MR  |

Model File Identifier  
X

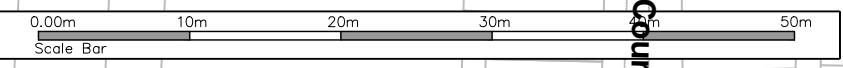
|            |                          |                 |                               |             |           |
|------------|--------------------------|-----------------|-------------------------------|-------------|-----------|
| Scale      | 1:250 @ A1<br>1:500 @ A3 | Project         | CLONMEL TOWN<br>URBAN DESIGN  |             |           |
| Created on | MARCH 2020               | Title           | General Arrangements          |             |           |
| Sheets     | 01 of 07                 | File Identifier | MGT0491-RPS-00-XX-DG-C-GA0001 | Drawing No. | GA0001-01 |
|            |                          | Status          | S1                            | Rev         | P03       |

G:\Projects\ALL RPS\ES PROJECTS\2019 Clonmel Public Realm\landscape\Current\Series\100 General Arrangement Plans\Part VIII Application\MGT0491-RPS-00-XX-DG-C-GA0001\_P01\_03.dwg



**LEGEND**

- Extents of Part VIII application (1.99 Ha)
- Semi-Mature tree planting within purpose built tree pits
- Amenity planting areas to include grasses and perennials to provide year round interest
- Large unit Natural Stone Paving (Buff/ Beige coloured) to Footways
- Medium unit Natural Stone Paving (Buff/ Beige coloured) to trafficked areas and pedestrian areas
- Small unit Natural Stone Paving (Buff/ Beige coloured) to back of Footway/ Building Line
- Small unit Natural Stone Paving (Grey/ Grey Blue coloured) to footways as contrasting coloured paved sections
- Medium unit Natural Stone Paving (Grey / Grey Blue coloured) to trafficked areas and pedestrian crossings as contrasting coloured paved sections
- Large unit Concrete Paving (Buff/ Beige coloured) to Footways
- Medium unit Concrete Paving (Grey / Blue Grey coloured) to trafficked areas as contrasting coloured paved section.
- Natural Stone Kerbs in contrasting colour (Silver Grey)
- Sections of Natural Stone Kerb in dropped position, colour to match kerbs within scheme (Silver Grey)
- Sections of Natural Stone Flush Trims Colour to match kerbs within scheme (Silver Grey)
- Sections of Natural Stone Drainage Channels. Colour to match kerbs within scheme (Silver Grey)
- Asphalt surfacing to carriageways
- Asphalt surfacing to parking bays with coloured chippings (Red)
- Asphalt surfacing to carriageway with coloured chippings (Buff)
- Coloured surfacing to delineate disabled parking bays. Colour to be blue with white line road markings
- Raised pedestrian crossings
- Tactile paving (Buff) to uncontrolled pedestrian crossings
- Tactile paving (Red) to controlled pedestrian crossings
- Tactile Corduroy paving (Buff) as warning to top and bottom of steps
- Granite feature seating incorporating amenity planting (Grasses and perennials)
- Feature Seating Location
- Feature Seating Location with amenity / perennial planting
- Feature plinth seat to top of low walling
- Feature light column location
- Litter Bin location
- Proposed Location for Cycle rack
- Bollard location
- Water re-fill station location
- Wayfinding sign location
- Ground level brass sign location
- Pop up Power supply unit location
- Feature railings
- Sections of ground level strip lighting to alleyways and pedestrian priority areas
- Proposed functional lighting column location
- Proposed functional wall mounted light location
- SMART Bench location
- Potential location for temporary high tensile canopy / cover
- New road markings (white lining) to lanes and parking bays



NOTES  
• OSI Map Ref: 5430-11

Client

Comhairle Contae Thiobraid Árann  
Tipperary County Council

**General Notes**

(i) Hard copies, dwf and pdf will form a controlled issue of the drawing. All other formats (dwg etc.) are deemed to be an uncontrolled issue and any work carried out based on these files is at the recipients own risk. RPS will not accept any responsibility for any errors from the use of these files, either by human error by the recipient, listing of the un-dimensioned measurements, compatibility with the recipients software, and any errors arising when these files are used to aid the recipients drawing production, or setting out on site.

(ii) DO NOT SCALE, use figured dimensions only.

(iii) This drawing is the property of RPS, it is a project confidential classified document. It must not be copied used or its contents divulged without prior written consent. The needs and expectations of client and RPS must be considered when working with this drawing.

(iv) Information including topographical survey, geotechnical investigation and utility detail used in the design have been provided by others.

(v) All Levels refer to Ordnance Survey Datum, Malin Head.

|     |         |               |                       |     |
|-----|---------|---------------|-----------------------|-----|
| Rev | Date    | Drawn/Checked | Amendment / Issue     | App |
| P03 | Jul. 20 | SK/ML         | Part VIII Application | ML  |

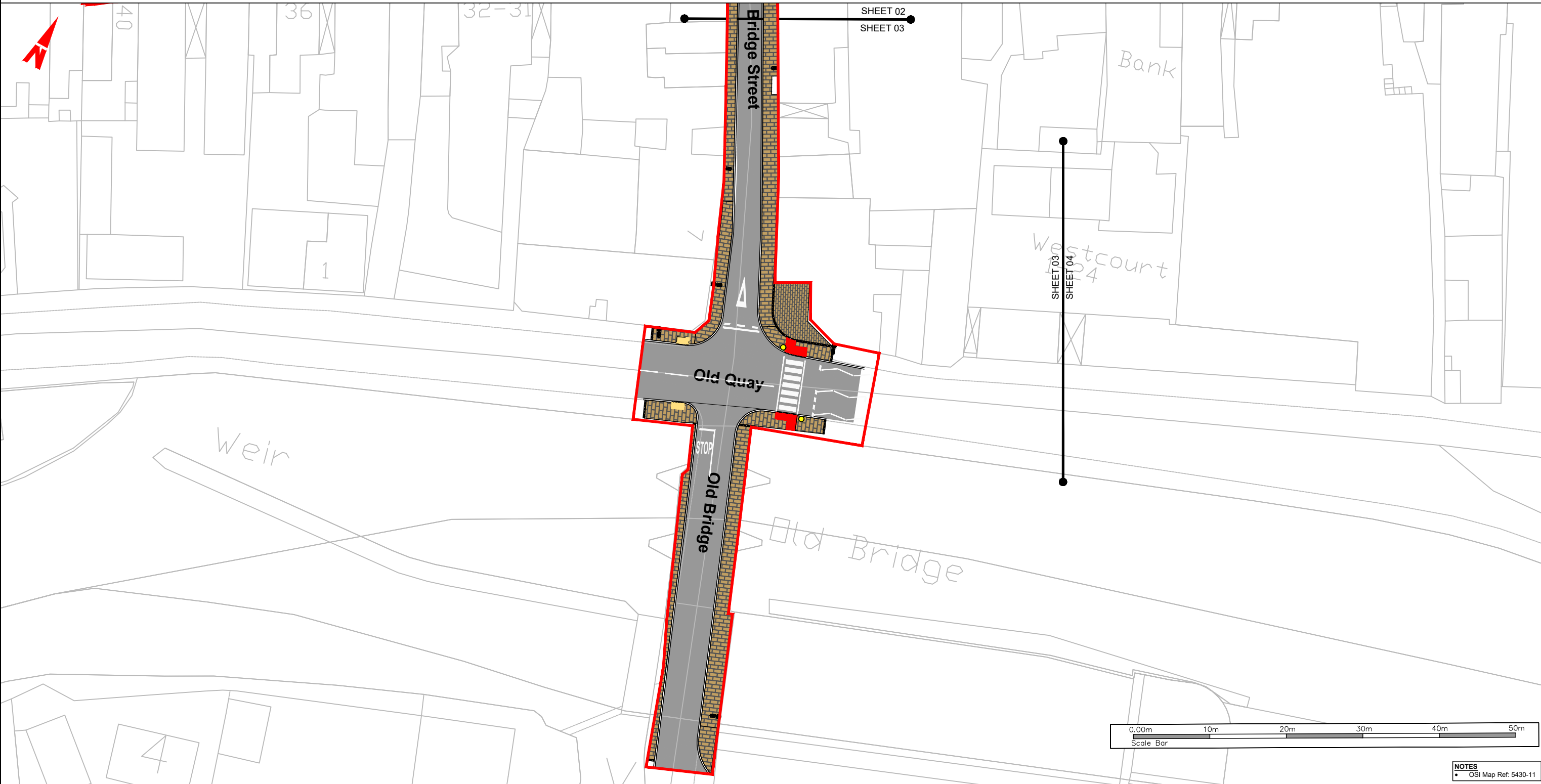
Model File Identifier  
X

|            |                          |                               |                              |        |     |
|------------|--------------------------|-------------------------------|------------------------------|--------|-----|
| Scale      | 1:250 @ A1<br>1:500 @ A3 | Project                       | CLONMEL TOWN<br>URBAN DESIGN |        |     |
| Created on | MARCH 2020               | Title                         | General Arrangements         |        |     |
| Sheets     | 02 of 07                 | File Identifier               | Drawing No.                  | Status | Rev |
|            |                          | MGT0491-RPS-00-XX-DG-C-GA0001 | GA0001-02                    | S1     | P03 |

G:\Projects\ALL RPS\ES Projects\2089 Clonmel Public Realm\landscape\Current\Series\100 General Arrangement Plans\Part VIII Application\MGT0491-RPS-00-XX-DG-C-GA0001\_P01.dwg

**LEGEND**

|  |  |   |  |   |   |  |  |
|--|--|---|--|---|---|--|--|
| Extents of Part VIII application (1.99 Ha)   | Small unit Natural Stone Paving (Buff/Beige coloured) to back of Footway/ Building Line  | Natural Stone Kerbs in contrasting colour (Silver Grey)   | Asphalt surfacing to parking bays with coloured chippings (Red)  | Tactile paving (Red) to controlled pedestrian crossings                         | Feature plinth seat to top of low walling | Wayfinding sign location   | Proposed functional lighting column location                 |
| Semi-Mature tree planting within purpose built tree pits   | Small unit Natural Stone Paving (Grey/ Grey Blue coloured) to footways as contrasting coloured paved sections                                    | Sections of Natural Stone Kerb in dropped position, colour to match kerbs within scheme (Silver Grey) | Asphalt surfacing to carriageway with coloured chippings (Buff)  | Tactile Corduroy paving (Buff) as warning to top and bottom of steps            | Feature light column location             | Ground level brass sign location   | Proposed functional wall mounted light location              |
| Amenity planting areas to include grasses and perennials to provide year round interest          | Medium unit Natural Stone Paving (Grey / Grey Blue coloured) to trafficked areas and pedestrian crossings as contrasting coloured paved sections | Sections of Natural Stone Flush Trims Colour to match kerbs within scheme (Silver Grey)               | Coloured surfacing to delineate disabled parking bays. Colour to be blue with white line road markings | Granite feature seating incorporating amenity planting (Grasses and perennials) | Litter Bin location                       | Pop up Power supply unit location  | SMART Bench location   |
| Large unit Natural Stone Paving (Buff/ Beige coloured) to Footways                               | Large unit Concrete Paving (Buff/ Beige coloured) to Footways  | Sections of Natural Stone Drainage Channels. Colour to match kerbs within scheme (Silver Grey)        | Raised pedestrian crossings  | Feature Seating Location  | Proposed Location for Cycle rack          | Feature railings   | Potential location for temporary high tensile canopy / cover |
| Medium unit Natural Stone Paving (Buff/ Beige coloured) to trafficked areas and pedestrian areas | Medium unit Concrete Paving (Grey / Blue Grey coloured) to trafficked areas as contrasting coloured paved section.                               | Asphalt surfacing to carriageways   | Tactile paving (Buff) to uncontrolled pedestrian crossings   | Feature Seating Location with amenity / perennial planting                      | Bollard location                          | Sections of ground level strip lighting to alleyways and pedestrian priority areas | New road markings (white lining) to lanes and parking bays   |
|  |  |   |  | Water re-fill station location  | Water re-fill station location            |  |  |



Client

Comhairle Contae Thiobraid Árann  
Tipperary County Council

**General Notes**

(i) Hard copies, dwf and pdf will form a controlled issue of the drawing. All other formats (dwg etc.) are deemed to be an uncontrolled issue and any work carried out based on these files is at the recipient's own risk. RPS will not accept any responsibility for any errors from the use of these files, either by human error by the recipient, listing of the un-dimensioned measurements, compatibility with the recipient's software, and any errors arising when these files are used to aid the recipient's drawing production, or setting out on site.

(ii) DO NOT SCALE, use figured dimensions only.

(iii) This drawing is the property of RPS, it is a project confidential classified document. It must not be copied used or its contents divulged without prior written consent. The needs and expectations of client and RPS must be considered when working with this drawing.

(iv) Information including topographical survey, geotechnical investigation and utility detail used in the design have been provided by others.

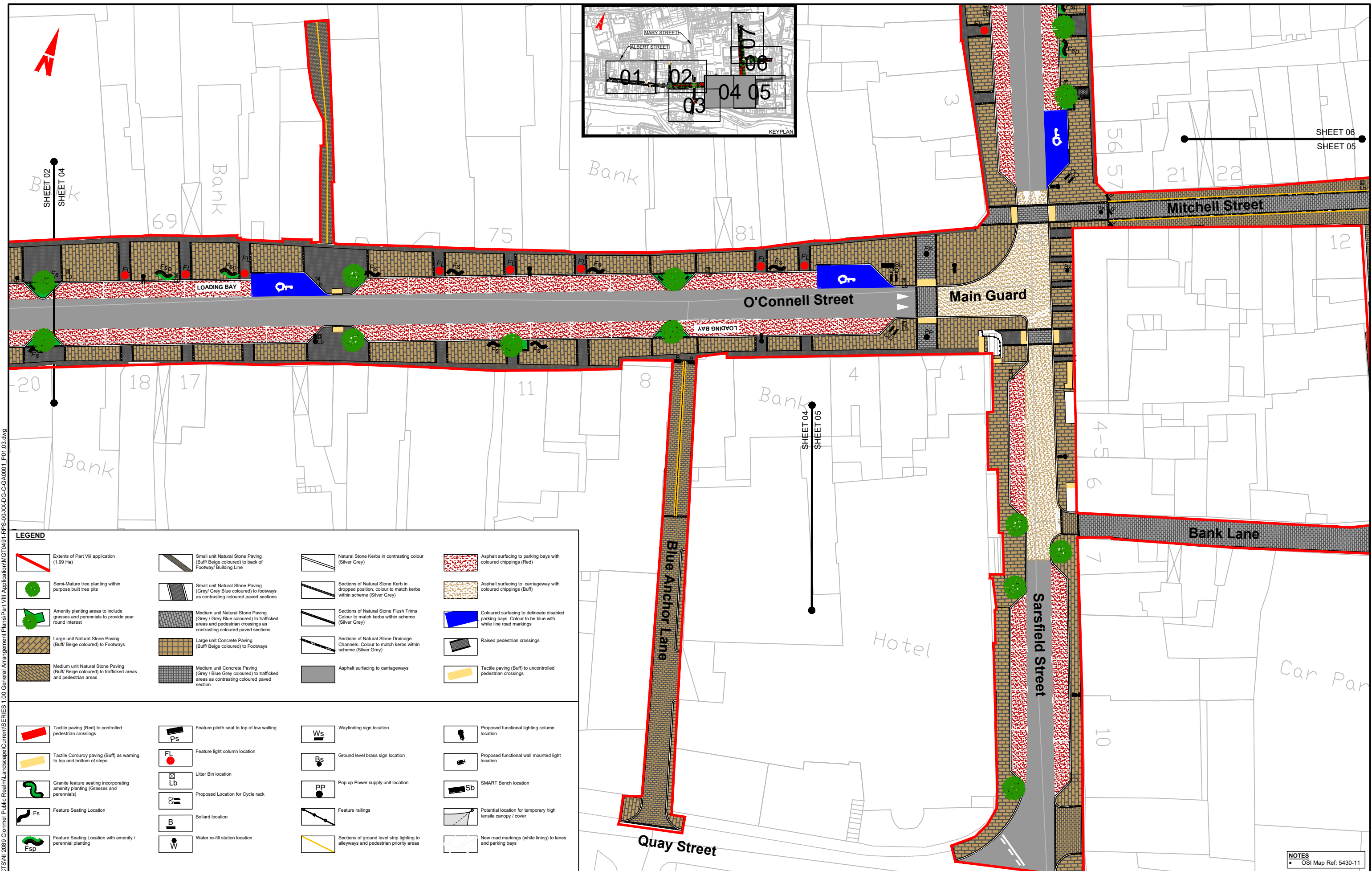
(v) All Levels refer to Ordnance Survey Datum, Malin Head.

|     |         |          |                       |     |
|-----|---------|----------|-----------------------|-----|
| Rev | Date    | Drawn By | Amendment / Issue     | App |
| P03 | Jul. 20 | SK       | Part VIII Application | MR  |

Model File Identifier  
X

|            |                          |                               |                           |        |     |
|------------|--------------------------|-------------------------------|---------------------------|--------|-----|
| Scale      | 1:250 @ A1<br>1:500 @ A3 | Project                       | CLONMEL TOWN URBAN DESIGN |        |     |
| Created on | MARCH 2020               | Title                         | General Arrangements      |        |     |
| Sheets     | 03 of 07                 | File Identifier               | Drawing No.               | Status | Rev |
|            |                          | MGT0491-RPS-00-XX-DG-C-GA0001 | GA0001-03                 | S1     | P03 |

G:\Projects\ALL RPS\PROJECTS\2019 Clonmel Public Realm\landscape\Current\Series\100 General Arrangement Plans\Part VIII Application\MGT0491-RPS-00-XX-DG-C-GA0001\_P01\_03.dwg



C:\Projects\ALL RPS\ES PROJECTS\2019 Clonmel Public Realm\landscape\Current\Series\100 General Arrangement Plans\Part VIII Application\MG0491-RPS-00-XX-DG-C-GA0001\_P01\_03.dwg

| LEGEND |  |  |  |
|--------|--|--|--|
|        | Extents of Part VIII application (1.99 Ha)   |  | Small unit Natural Stone Paving (Buff/ Beige coloured) to back of Footway/ Building Line   |
|        | Semi-Mature tree planting within purpose built tree pits   |  | Small unit Natural Stone Paving (Grey/ Grey Blue coloured) to footways   |
|        | Amenity planting areas to include grasses and perennials to provide year round interest                |  | Medium unit Natural Stone Paving (Grey / Grey Blue coloured) to trafficked areas and pedestrian crossings as contrasting coloured paved sections |
|        | Large unit Natural Stone Paving (Buff/ Beige coloured) to Footways                                     |  | Large unit Concrete Paving (Buff/ Beige coloured) to Footways  |
|        | Medium unit Natural Stone Paving (Buff/ Beige coloured) to trafficked areas and pedestrian areas       |  | Medium unit Concrete Paving (Grey / Blue Grey coloured) to trafficked areas as contrasting coloured paved section.                               |
|        | Tactile paving (Red) to controlled pedestrian crossings  |  | Natural Stone Kerbs in contrasting colour (Silver Grey)  |
|        | Tactile Corduroy paving (Buff) as warning to top and bottom of steps                                   |  | Sections of Natural Stone Kerb in dropped position, colour to match kerbs within scheme (Silver Grey)  |
|        | Granite feature seating incorporating amenity planting (Grasses and perennials)                        |  | Sections of Natural Stone Flush Trims Colour to match kerbs within scheme (Silver Grey)  |
|        | Feature Seating Location   |  | Sections of Natural Stone Drainage Channels. Colour to match kerbs within scheme (Silver Grey)   |
|        | Feature Seating Location with amenity / perennial planting   |  | Asphalt surfacing to carriageways  |
|        | Feature plinth seat to top of low walling  |  | Wayfinding sign location   |
|        | Feature light column location  |  | Ground level brass sign location   |
|        | Litter Bin location  |  | Pop up Power supply unit location  |
|        | Proposed Location for Cycle rack   |  | SMART Bench location   |
|        | Bollard location   |  | Potential location for temporary high tensile canopy / cover   |
|        | Water re-fill station location   |  | New road markings (white lining) to lanes and parking bays   |
|        | Asphalt surfacing to parking bays with coloured chippings (Red)  |  |  |
|        | Asphalt surfacing to carriageway with coloured chippings (Buff)  |  |  |
|        | Coloured surfacing to delineate disabled parking bays. Colour to be blue with white line road markings |  |  |
|        | Raised pedestrian crossings  |  |  |
|        | Tactile paving (Buff) to uncontrolled pedestrian crossings   |  |  |
|        | Proposed functional lighting column location   |  |  |
|        | Proposed functional wall mounted light location  |  |  |

Client

Comhairle Contae Thiobraid Árann  
Tipperary County Council

**General Notes**

(i) Hard copies, dwf and pdf will form a controlled issue of the drawing. All other formats (dwg etc.) are deemed to be an uncontrolled issue and any work carried out based on these files is at the recipients own risk. RPS will not accept any responsibility for any errors from the use of these files, either by human error by the recipient, listing of the un-dimensioned measurements, compatibility with the recipients software, and any errors arising when these files are used to aid the recipients drawing production, or setting out on site.

(ii) DO NOT SCALE, use figured dimensions only.

(iii) This drawing is the property of RPS, it is a project confidential classified document. It must not be copied used or its contents divulged without prior written consent. The needs and expectations of client and RPS must be considered when working with this drawing.

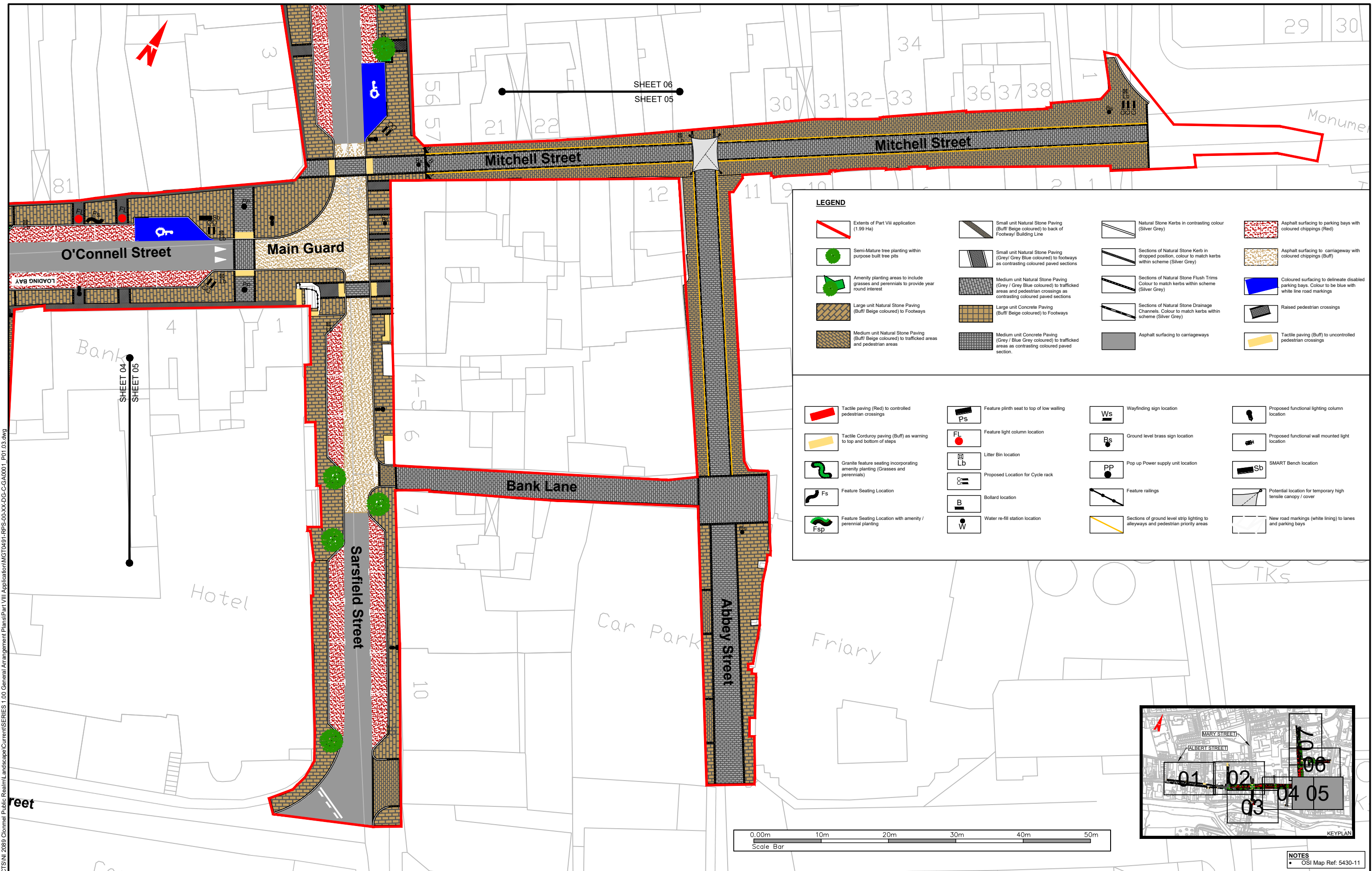
(iv) Information including topographical survey, geotechnical investigation and utility detail used in the design have been provided by others.

(v) All Levels refer to Ordnance Survey Datum, Malin Head.

| Rev | Date    | Drawn/Checked | Amendment / Issue     | App |
|-----|---------|---------------|-----------------------|-----|
| P03 | Jul. 20 | SK/PH         | Part VIII Application | MR  |

Model File Identifier  
X

|            |                          |                              |                              |        |     |
|------------|--------------------------|------------------------------|------------------------------|--------|-----|
| Scale      | 1:250 @ A1<br>1:500 @ A3 | Project                      | CLONMEL TOWN<br>URBAN DESIGN |        |     |
| Created on | MARCH 2020               | Title                        | General Arrangements         |        |     |
| Sheets     | 04 of 07                 | File Identifier              | Drawing No.                  | Status | Rev |
|            |                          | MG0491-RPS-00-XX-DG-C-GA0001 | GA0001-04                    | S1     | P03 |



| LEGEND |  |  |  |
|--------|--|--|--|
|        | Extents of Part VIII application (1.99 Ha)   |  | Natural Stone Kernels in contrasting colour (Silver Grey)  |
|        | Semi-Mature tree planting within purpose built tree pits   |  | Sections of Natural Stone Kerb in dropped position, colour to match kerbs within scheme (Silver Grey)  |
|        | Amenity planting areas to include grasses and perennials to provide year round interest  |  | Sections of Natural Stone Flush Trims Colour to match kerbs within scheme (Silver Grey)                |
|        | Large unit Natural Stone Paving (Buff/Beige coloured) to Footways  |  | Sections of Natural Stone Drainage Channels. Colour to match kerbs within scheme (Silver Grey)         |
|        | Medium unit Natural Stone Paving (Grey / Grey Blue coloured) to trafficked areas and pedestrian crossings as contrasting coloured paved sections |  | Asphalt surfacing to carriageways  |
|        | Large unit Concrete Paving (Buff/Beige coloured) to Footways   |  | Asphalt surfacing to parking bays with coloured chippings (Red)  |
|        | Medium unit Concrete Paving (Grey / Blue Grey coloured) to trafficked areas as contrasting coloured paved section.                               |  | Asphalt surfacing to carriageway with coloured chippings (Buff)  |
|        | Tactile paving (Red) to controlled pedestrian crossings  |  | Coloured surfacing to delineate disabled parking bays. Colour to be blue with white line road markings |
|        | Tactile Corduroy paving (Buff) as warning to top and bottom of steps   |  | Raised pedestrian crossings  |
|        | Granite feature seating incorporating amenity planting (Grasses and perennials)  |  | Tactile paving (Buff) to uncontrolled pedestrian crossings   |
|        | Feature Seating Location   |  | Feature plinth seat to top of low walling  |
|        | Feature Seating Location with amenity / perennial planting   |  | Feature light column location  |
|        | Proposed Location for Cycle rack   |  | Litter Bin location  |
|        | Bollard location   |  | Proposed Location for Cycle rack   |
|        | Water re-fill station location   |  | Bollard location   |
|        | Wayfinding sign location   |  | Water re-fill station location   |
|        | Proposed functional lighting column location   |  | Wayfinding sign location   |
|        | Ground level brass sign location   |  | Proposed functional lighting column location   |
|        | SMART Bench location   |  | Ground level brass sign location   |
|        | Potential location for temporary high tensile canopy / cover   |  | SMART Bench location   |
|        | New road markings (white lining) to lanes and parking bays   |  | Potential location for temporary high tensile canopy / cover   |



NOTES  
• OSI Map Ref: 5430-11

Client

Comhairle Contae Thiobraid Árann  
Tipperary County Council

General Notes

(i) Hard copies, dwf and pdf will form a controlled issue of the drawing. All other formats (dwg etc.) are deemed to be an uncontrolled issue and any work carried out based on these files is at the recipients own risk. RPS will not accept any responsibility for any errors from the use of these files, either by human error by the recipient, listing of the un-dimensioned measurements, compatibility with the recipients software, and any errors arising when these files are used to aid the recipients drawing production, or setting out on site.

(ii) DO NOT SCALE, use figured dimensions only.

(iii) This drawing is the property of RPS, it is a project confidential classified document. It must not be copied used or its contents divulged without prior written consent. The needs and expectations of client and RPS must be considered when working with this drawing.

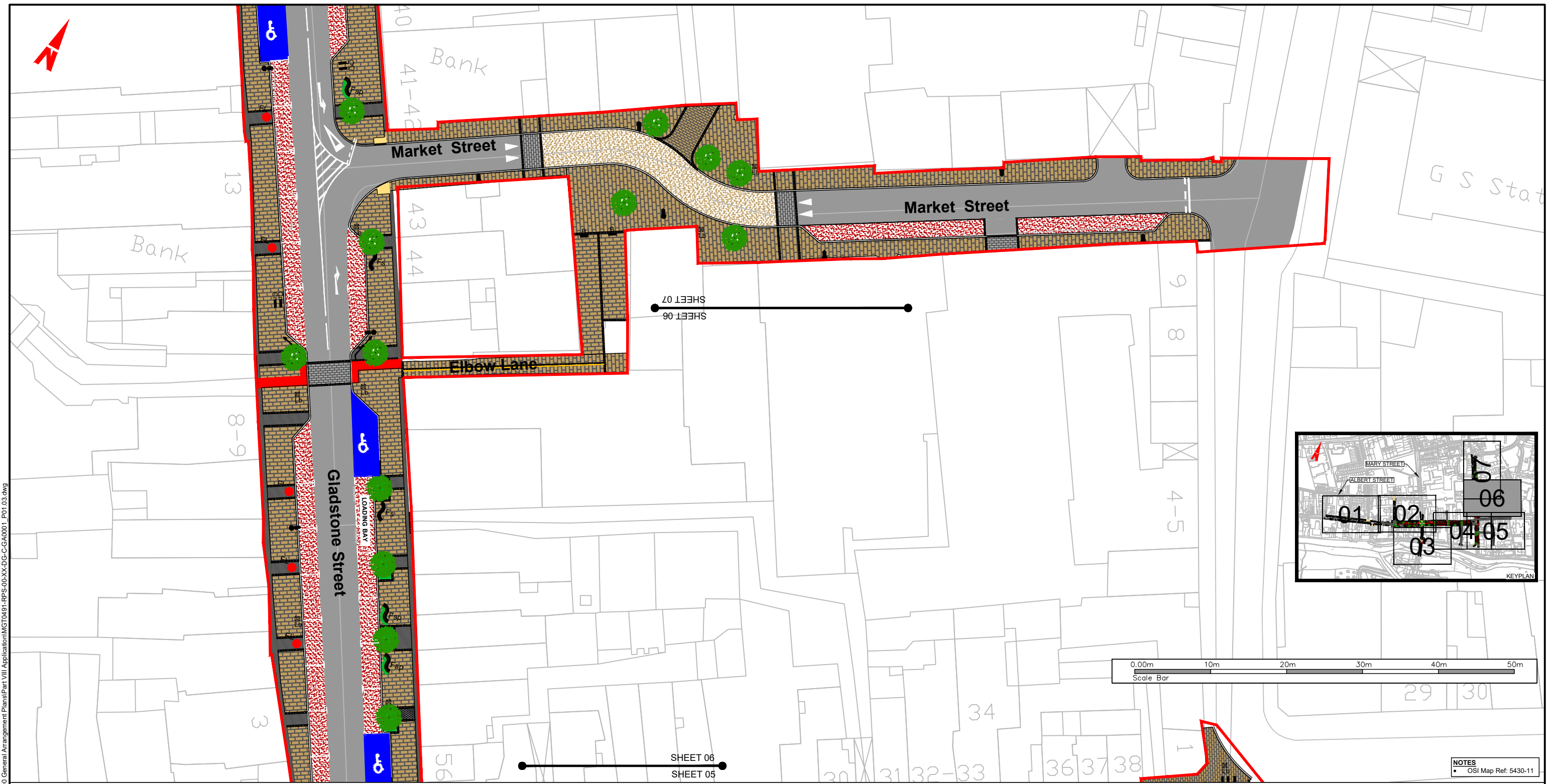
(iv) Information including topographical survey, geotechnical investigation and utility detail used in the design have been provided by others.

(v) All Levels refer to Ordnance Survey Datum, Malin Head.

|     |         |          |                       |     |
|-----|---------|----------|-----------------------|-----|
| Rev | Date    | Drawn By | Amendment / Issue     | App |
| P03 | Jul. 20 | SK       | Part VIII Application | MR  |

Model File Identifier  
X

|                 |                               |             |                           |        |    |
|-----------------|-------------------------------|-------------|---------------------------|--------|----|
| Scale           | 1:250 @ A1<br>1:500 @ A3      | Project     | CLONMEL TOWN URBAN DESIGN |        |    |
| Created on      | MARCH 2020                    | Title       | General Arrangements      |        |    |
| Sheets          | 05 of 07                      | Drawing No. | GA0001-05                 | Status | S1 |
| File Identifier | MGT0491-RPS-00-XX-DG-C-GA0001 | Rev         | P03                       |        |    |



NOTES  
• OSI Map Ref: 5430-11

**LEGEND**

|  |  |  |   |  |  |  |   |  |   |  |                                   |  |  |
|--|--|--|---|--|--|--|---|--|---|--|-----------------------------------|--|--|
|  | Extents of Part VIII application (1.99 Ha)   |  | Natural Stone Kerbs in contrasting colour (Silver Grey)   |  | Asphalt surfacing to parking bays with coloured chippings (Red)  |  | Tactile paving (Red) to controlled pedestrian crossings                         |  | Feature plinth seat to top of low walling |  | Wayfinding sign location          |  | Proposed functional lighting column location                 |
|  | Semi-Mature tree planting within purpose built tree pits   |  | Sections of Natural Stone Kerb in dropped position, colour to match kerbs within scheme (Silver Grey) |  | Asphalt surfacing to carriageway with coloured chippings (Buff)  |  | Tactile Corduroy paving (Buff) as warning to top and bottom of steps            |  | Feature light column location             |  | Ground level brass sign location  |  | Proposed functional wall mounted light location              |
|  | Amenity planting areas to include grasses and perennials to provide year round interest  |  | Sections of Natural Stone Flush Trims Colour to match kerbs within scheme (Silver Grey)               |  | Coloured surfacing to delineate disabled parking bays. Colour to be blue with white line road markings |  | Granite feature seating incorporating amenity planting (Grasses and perennials) |  | Litter Bin location                       |  | Pop up Power supply unit location |  | SMART Bench location   |
|  | Large unit Natural Stone Paving (Buff/ Beige coloured) to Footways   |  | Sections of Natural Stone Drainage Channels. Colour to match kerbs within scheme (Silver Grey)        |  | Raised pedestrian crossings  |  | Feature Seating Location  |  | Proposed Location for Cycle rack          |  | Feature railings                  |  | Potential location for temporary high tensile canopy / cover |
|  | Medium unit Natural Stone Paving (Grey/ Blue coloured) to trafficked areas and pedestrian crossings as contrasting coloured paved sections |  | Asphalt surfacing to carriageways   |  | Tactile paving (Buff) to uncontrolled pedestrian crossings   |  | Feature Seating Location with amenity / perennial planting                      |  | Bollard location                          |  | Feature railings                  |  | New road markings (white lining) to lanes and parking bays   |
|  | Large unit Concrete Paving (Buff/ Beige coloured) to Footways  |  |   |  |  |  |   |  | Water re-fill station location            |  |                                   |  |  |
|  | Medium unit Concrete Paving (Grey/ Blue coloured) to trafficked areas as contrasting coloured paved section.                               |  |   |  |  |  |   |  |   |  |                                   |  |  |

**General Notes**

(i) Hard copies, dwf and pdf will form a controlled issue of the drawing. All other formats (dwg etc.) are deemed to be an uncontrolled issue and any work carried out based on these files is at the recipient's own risk. RPS will not accept any responsibility for any errors from the use of these files, either by human error by the recipient, listing of the un-dimensioned measurements, compatibility with the recipient's software, and any errors arising when these files are used to aid the recipient's drawing production, or setting out on site.

(ii) DO NOT SCALE, use figured dimensions only.

(iii) This drawing is the property of RPS, it is a project confidential classified document. It must not be copied used or its contents divulged without prior written consent. The needs and expectations of client and RPS must be considered when working with this drawing.

(iv) Information including topographical survey, geotechnical investigation and utility detail used in the design have been provided by others.

(v) All Levels refer to Ordnance Survey Datum, Malin Head.

|     |         |               |                       |     |
|-----|---------|---------------|-----------------------|-----|
| Rev | Date    | Drawn/Checked | Amendment / Issue     | App |
| P03 | Jul. 20 | SK/PH         | Part VIII Application | MR  |

Scale: 1:250 @ A1  
1:500 @ A3

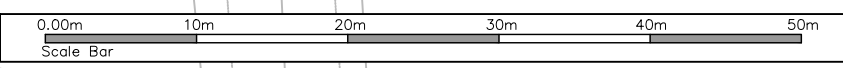
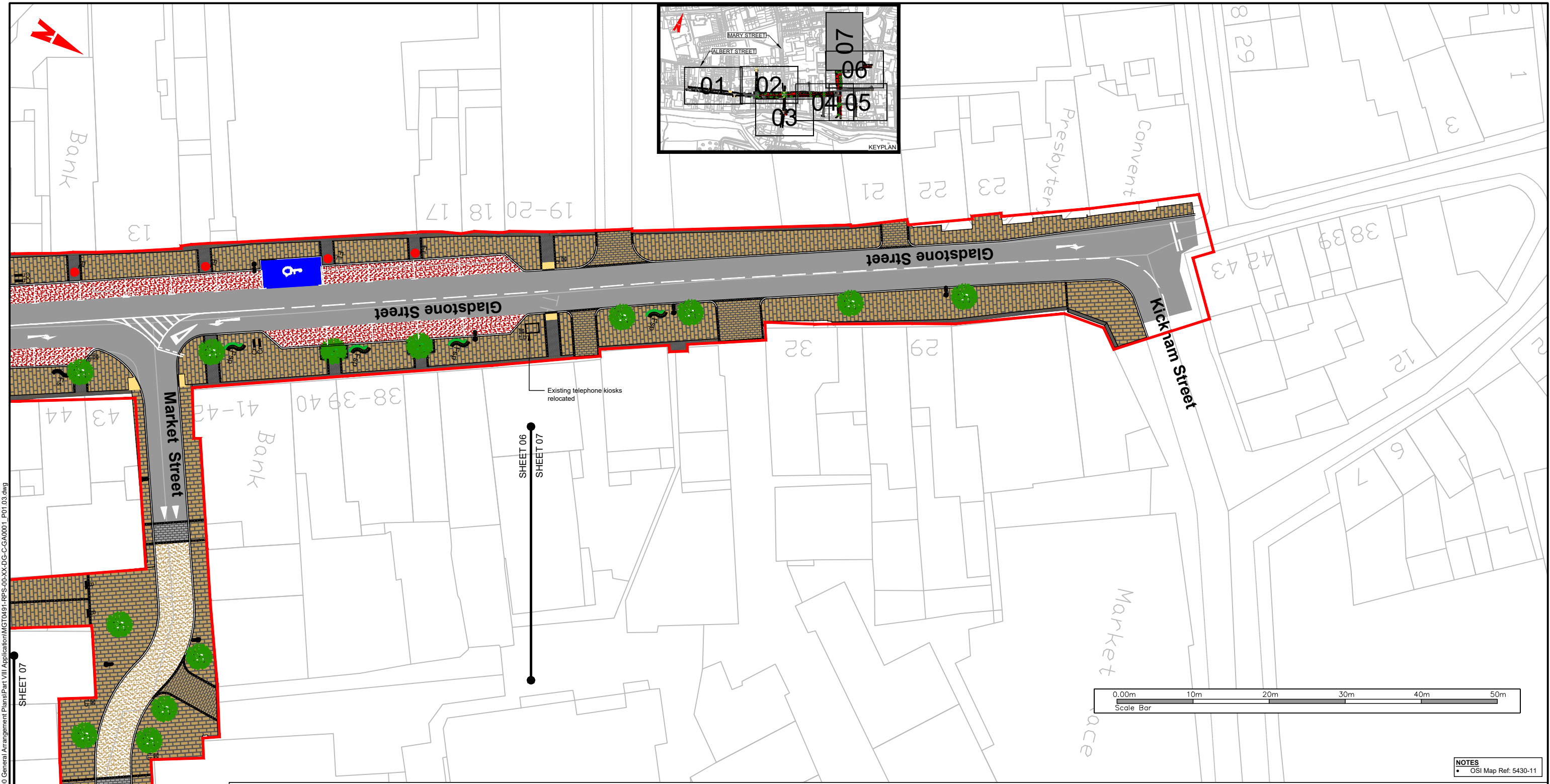
Created on: MARCH 2020

Sheets: 06 of 07

Model File Identifier: X

|                               |  |        |     |
|-------------------------------|--|--------|-----|
| Client                        | Comhairle Contae Thiobraid Árann<br>Tipperary County Council |        |     |
| Project                       | CLONMEL TOWN<br>URBAN DESIGN                                 |        |     |
| Title                         | General Arrangements   |        |     |
| File Identifier               | Drawing No.  | Status | Rev |
| MGT0491-RPS-00-XX-DG-C-GA0001 | GA0001-06  | S1     | P03 |

G:\Projects\ALL RPS\ES PROJECTS\2019 Clonmel Public Realm\landscape\Current\Arrangement Plans\Part VIII Application\MGT0491-RPS-00-XX-DG-C-GA0001\_P01\_03.dwg



NOTES  
• OSI Map Ref: 5430-11

C:\Projects\ALL RPSES PROJECTS\2019 Clonmel Public Realm\landscape\Current\Series\100 General Arrangement Plans\Part VIII Application\MGT0491-RPS-00-XX-DG-C-GA0001\_P01.dwg

| LEGEND |   |
|--------|---|
|        | Extents of Part VIII application (1.99 Ha)  |
|        | Semi-Mature tree planting within purpose built tree pits  |
|        | Amenity planting areas to include grasses and perennials to provide year round interest   |
|        | Large unit Natural Stone Paving (Buff/ Beige coloured) to Footways  |
|        | Medium unit Natural Stone Paving (Buff/ Beige coloured) to trafficked areas and pedestrian areas  |
|        | Small unit Natural Stone Paving (Buff/ Beige coloured) to back of Footway/ Building Line  |
|        | Small unit Natural Stone Paving (Grey/ Grey Blue coloured) to footways as contrasting coloured paved sections                                   |
|        | Medium unit Natural Stone Paving (Grey/ Grey Blue coloured) to trafficked areas and pedestrian crossings as contrasting coloured paved sections |
|        | Large unit Concrete Paving (Buff/ Beige coloured) to Footways   |
|        | Medium unit Concrete Paving (Grey/ Blue Grey coloured) to trafficked areas as contrasting coloured paved section.                               |
|        | Natural Stone Kerbs in contrasting colour (Silver Grey)   |
|        | Sections of Natural Stone Kerb in dropped position, colour to match kerbs within scheme (Silver Grey)   |
|        | Sections of Natural Stone Flush Trims Colour to match kerbs within scheme (Silver Grey)   |
|        | Sections of Natural Stone Drainage Channels. Colour to match kerbs within scheme (Silver Grey)  |
|        | Asphalt surfacing to carriageways   |
|        | Asphalt surfacing to parking bays with coloured chippings (Red)   |
|        | Asphalt surfacing to carriageway with coloured chippings (Buff)   |
|        | Coloured surfacing to delineate disabled parking bays. Colour to be blue with white line road markings  |
|        | Raised pedestrian crossings   |
|        | Tactile paving (Buff) to uncontrolled pedestrian crossings  |
|        | Tactile paving (Red) to controlled pedestrian crossings   |
|        | Tactile Corduroy paving (Buff) as warning to top and bottom of steps  |
|        | Granite feature seating incorporating amenity planting (Grasses and perennials)   |
|        | Feature Seating Location  |
|        | Feature Seating Location with amenity / perennial planting  |
|        | Feature plinth seat to top of low walling   |
|        | Feature light column location   |
|        | Litter Bin location   |
|        | Proposed Location for Cycle rack  |
|        | Bollard location  |
|        | Water re-fill station location  |
|        | Wayfinding sign location  |
|        | Ground level brass sign location  |
|        | Pop up Power supply unit location   |
|        | Feature railings  |
|        | Sections of ground level strip lighting to alleyways and pedestrian priority areas  |
|        | Proposed functional lighting column location  |
|        | Proposed functional wall mounted light location   |
|        | SMART Bench location  |
|        | Potential location for temporary high tensile canopy / cover  |
|        | New road markings (white lining) to lanes and parking bays  |

Client

Comhairle Contae Thiobraid Árann  
Tipperary County Council

**General Notes**

(i) Hard copies, dwf and pdf will form a controlled issue of the drawing. All other formats (dwg etc.) are deemed to be an uncontrolled issue and any work carried out based on these files is at the recipient's own risk. RPS will not accept any responsibility for any errors from the use of these files, either by human error by the recipient, listing of the un-dimensioned measurements, compatibility with the recipient's software, and any errors arising when these files are used to aid the recipient's drawing production, or setting out on site.

(ii) DO NOT SCALE, use figured dimensions only.

(iii) This drawing is the property of RPS, it is a project confidential classified document. It must not be copied used or its contents divulged without prior written consent. The needs and expectations of client and RPS must be considered when working with this drawing.

(iv) Information including topographical survey, geotechnical investigation and utility detail used in the design have been provided by others.

(v) All Levels refer to Ordnance Survey Datum, Malin Head.

|     |         |               |                       |     |
|-----|---------|---------------|-----------------------|-----|
| Rev | Date    | Drawn/Checked | Amendment / Issue     | App |
| P03 | Jul. 20 | SK/PH         | Part VIII Application | MR  |

Model File Identifier  
X

|            |                          |                 |                               |             |           |
|------------|--------------------------|-----------------|-------------------------------|-------------|-----------|
| Scale      | 1:250 @ A1<br>1:500 @ A3 | Project         | CLONMEL TOWN<br>URBAN DESIGN  |             |           |
| Created on | MARCH 2020               | Title           | General Arrangements          |             |           |
| Sheets     | 07 of 07                 | File Identifier | MGT0491-RPS-00-XX-DG-C-GA0001 | Drawing No. | GA0001-07 |
|            |                          | Status          | S1                            | Rev         | P03       |