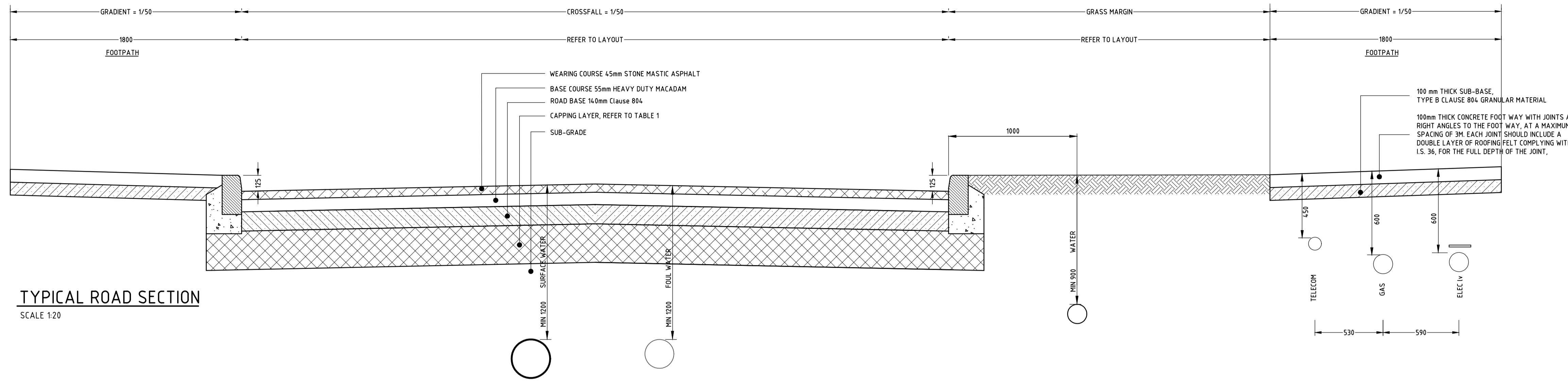


THIS DRAWING IS COPYRIGHT - ELECTRONIC DRAWING FILE

NOTES:

1. ALL HOUSE DRAINS TO BE 150mmØ
2. LOCAL DRAINS TO RUN AT A GRADIENT OF 1/40 UNLESS OTHERWISE NOTED.
3. DOUBLE GULLIES TO BE PROVIDED AT ALL ROAD SAG CURVES & CUL DE SACS WHERE INDICATED. SEPARATE CONNECTIONS 150mm DIA. SHALL BE PROVIDED FOR EACH GULLY. NO GALLEY SHALL BE MORE THAN 10m FROM A SURFACE WATER CONNECTION.
4. HOUSE DRAINS SHALL NOT PASS THROUGH A PROPERTY THEY DO NOT SERVE.
5. MANHOLES ON HOUSE DRAIN RUNS SHALL BE LOCATED IN PRIVATE PROPERTY IN ALL CASES.
6. FOR SEWER LONG SECTIONS SEE DRAWING No. 138 SERIES
7. FOR ROAD CONSTRUCTION DETAILS SEE DRG. No. 151.
8. FOR MANHOLE DETAILS SEE DRG. No. 152.
9. FOR PIPE BEDDING DETAILS SEE DRG. No. 153.
10. ALL PIPES WHEN ARE TO BE TAKEN IN CHARGE BY THE LOCAL AUTHORITY ARE TO BE CONCRETE PIPES COMPLYING WITH I.S. 6 & I.S. 166 OR B.S. 5911.



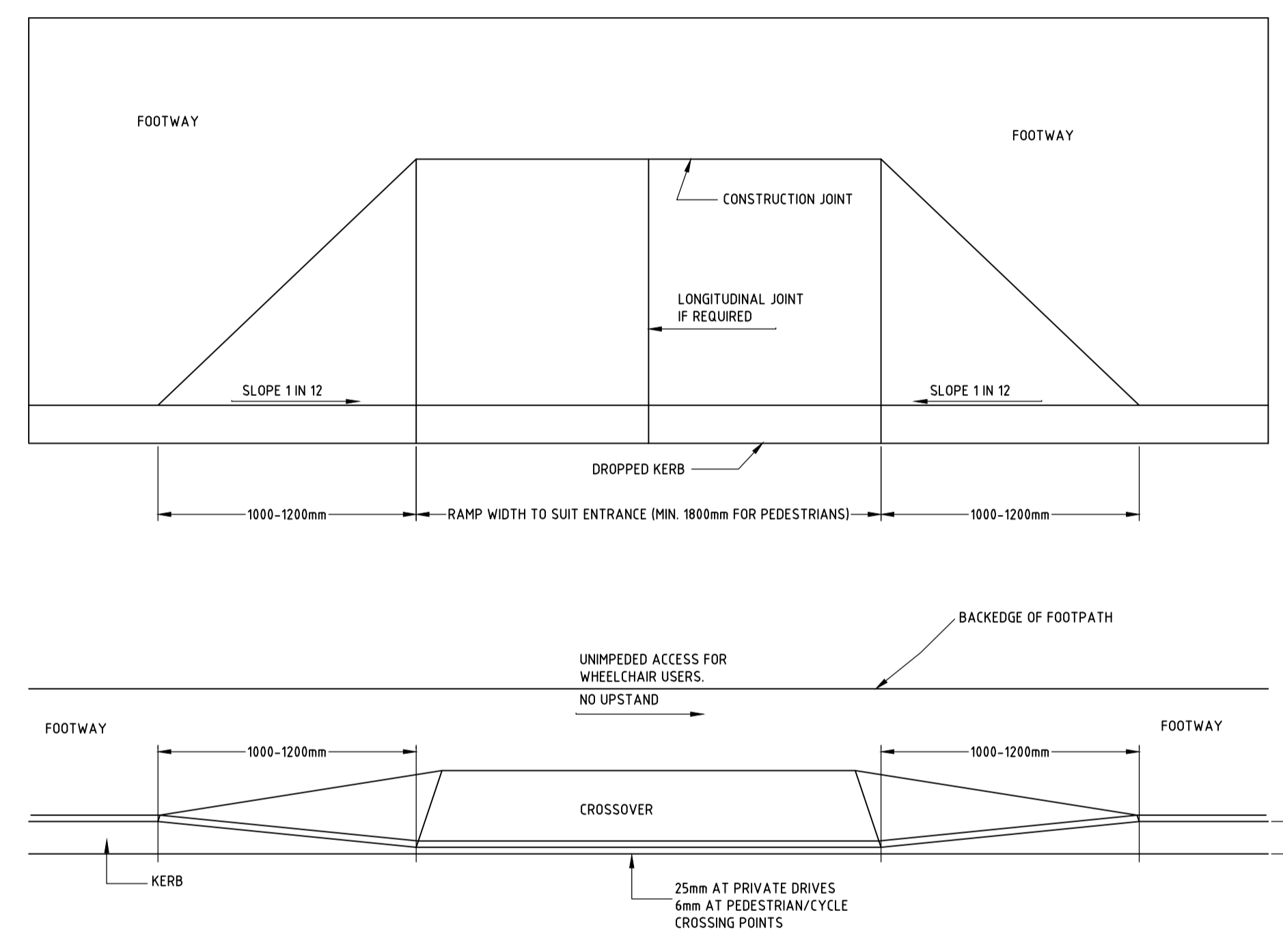
**TABLE No.1**

C.B.R. OF SUB GRADE (%)	MINIMUM THICKNESS OF CAPPING LAYER (MM)
Less than 2	REFER TO NOTE 1 BELOW
2-5	300
5-15	150
Greater than 15	0

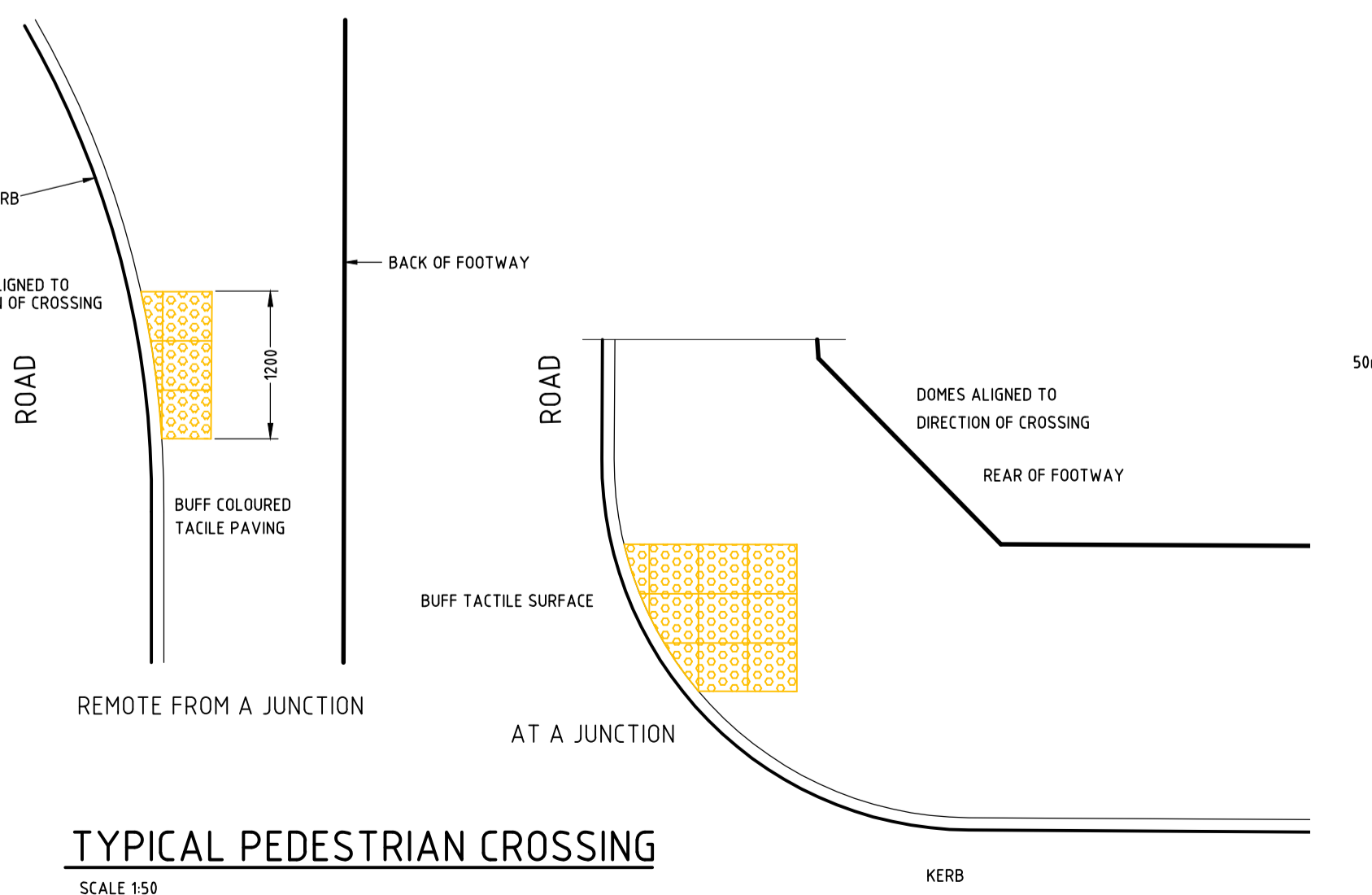
1. THE CONTRACTOR IS TO VERIFY THE CBR VALUES TO DETERMINE THE THICKNESS OF CAPPING LAYER, AS DIRECTED BY TABLE 1. SOFT SPOTS TO BE REMOVED AND REPLACED WITH SUITABLE GRANULAR MATERIAL.

Note: C.B.R. tests to be carried out at a minimum rate of 1 per road or 1 per 100m length of road.

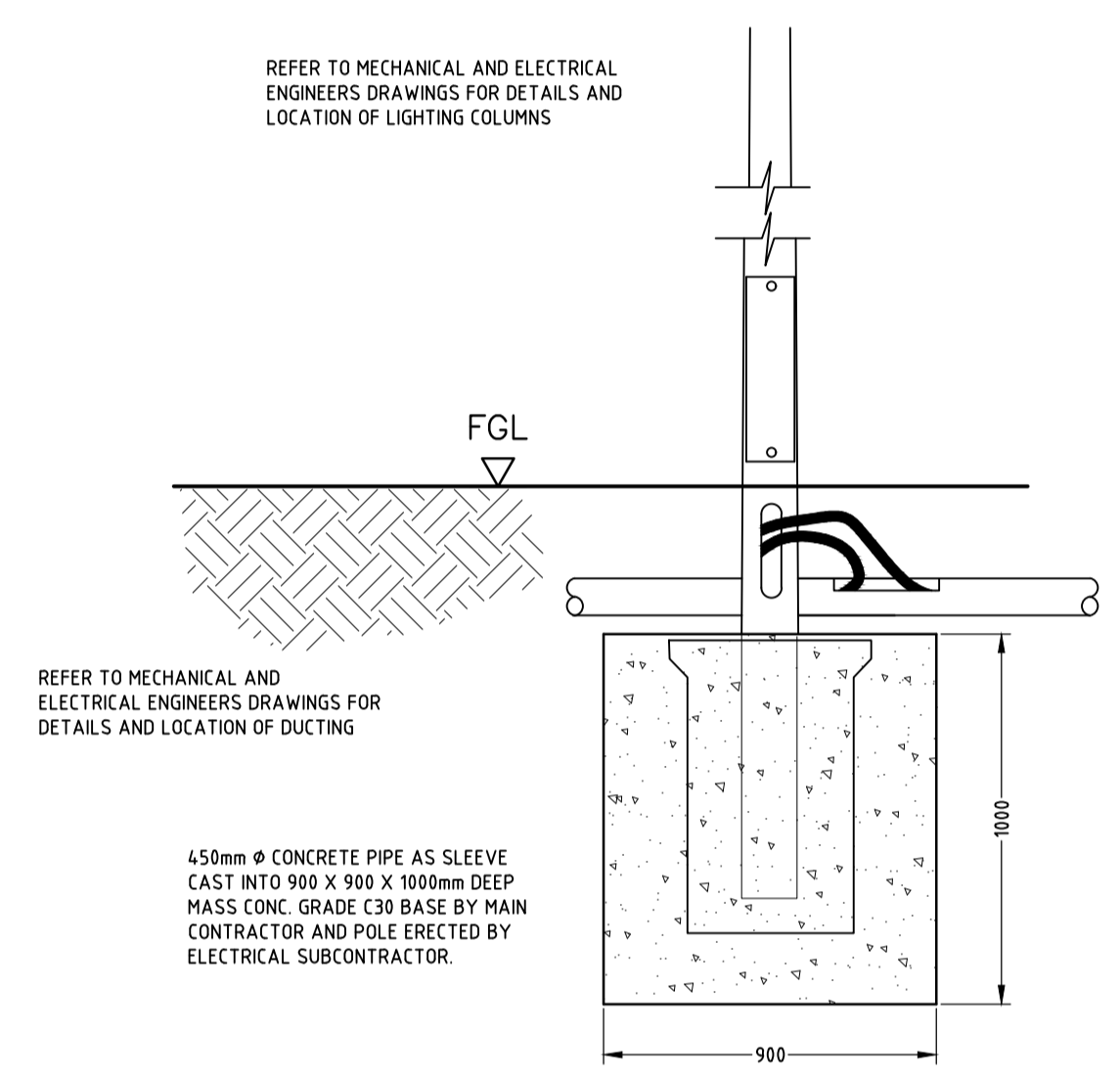
**TYPICAL ROAD SECTION**  
SCALE 1:20



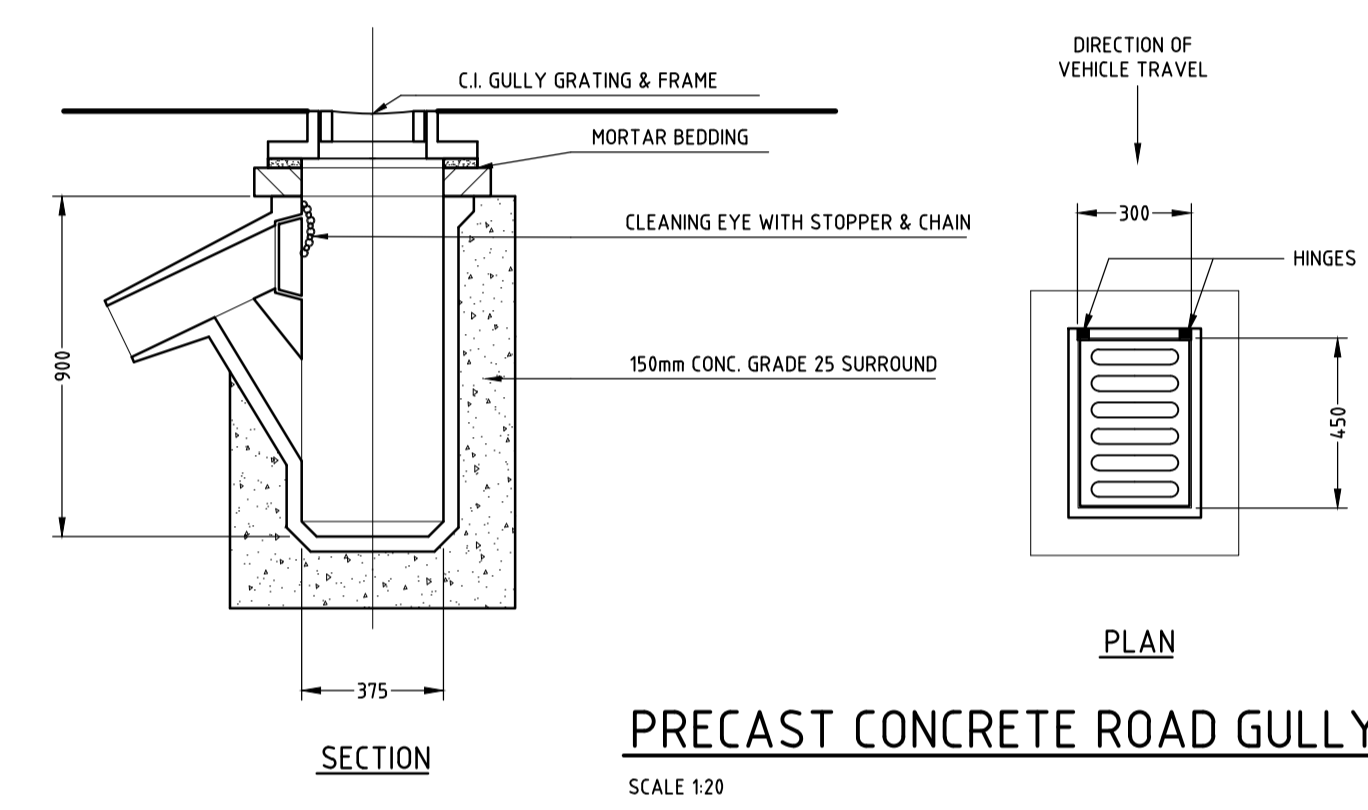
**DISHED KERB DETAIL AT PRIVATE DRIVES AND PEDESTRIAN CROSSING POINTS**  
N.T.S



**TYPICAL PEDESTRIAN CROSSING**  
SCALE 1:50

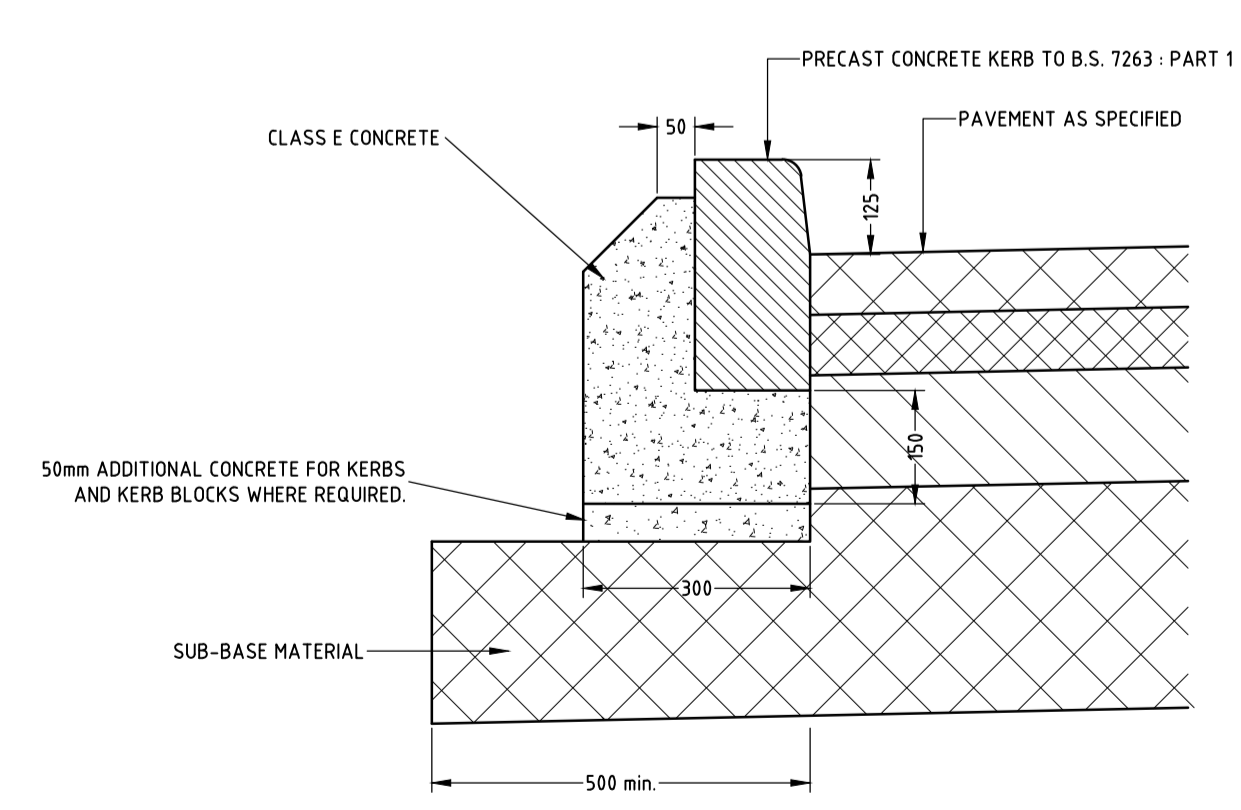


**TYPICAL LIGHTING BASE**  
SCALE 1:20

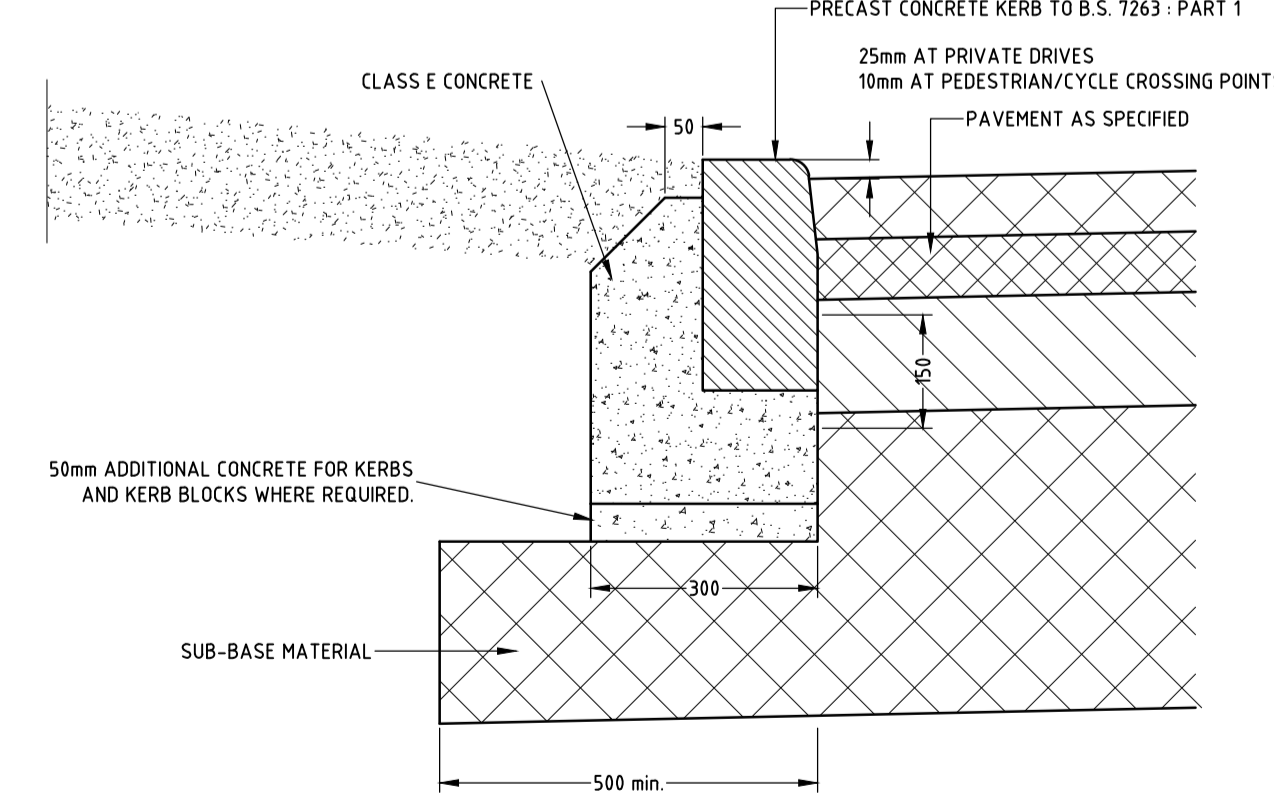


**PRECAST CONCRETE ROAD GULLY**  
SCALE 1:20

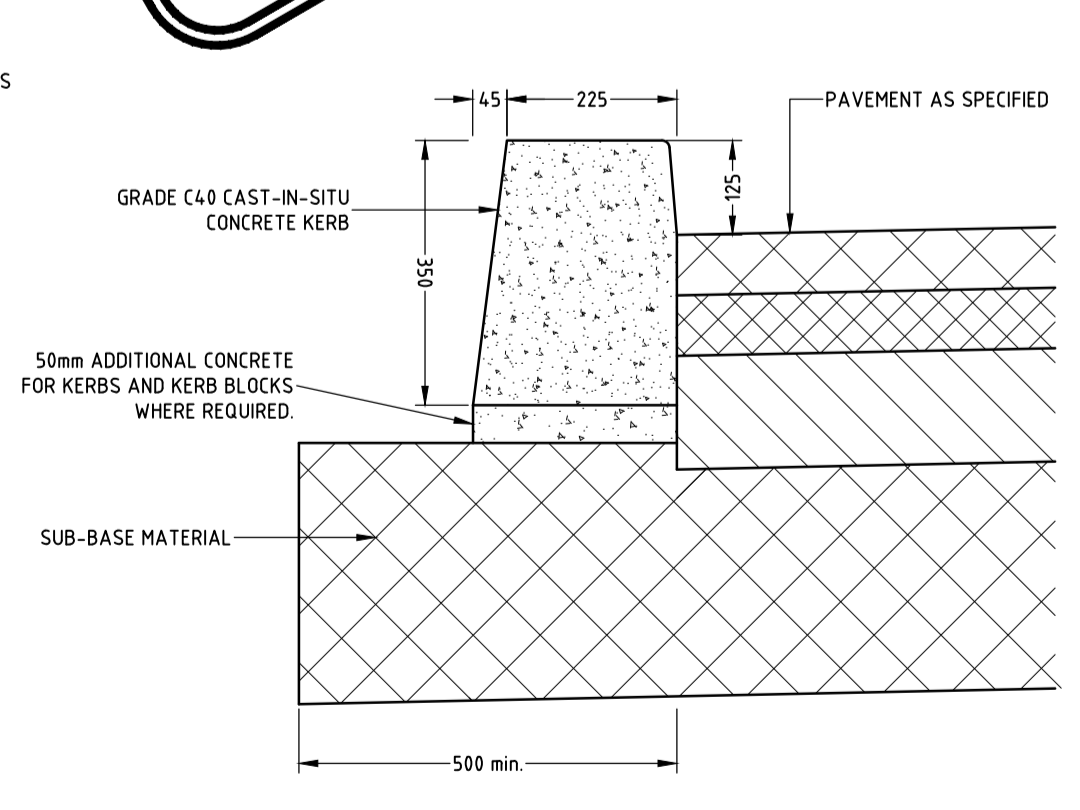
**NOT TO BE USED FOR CONSTRUCTION**



**KERB DETAIL A**  
SCALE 1:10



**KERB DETAIL B**  
SCALE 1:10



**KERB DETAIL C**  
SCALE 1:10

REV	DATE	DESCRIPTION	BY/CHKD/APPD

Client: **TIPPERARY COUNTY COUNCIL**

**PHM Consulting**  
Civil - Structural - Environmental

11 Mallow Street, Limerick, Ireland V94 WRN4  
Tel: +353 (0)61 576020 E-mail: info@phm.ie Web: www.phm.ie

**RESIDENTIAL DEVELOPMENT AT BANSHA, CO. TIPPERARY ROADS DETAILS**

Drawn	Scale	Project Number	Rev
POR	AS SHOWN	109-70	~
Chd.	Date	Drawing Number	
POR	20/05/2020	151	A1
Apprd.	Status		
EOD	PLANNING D2		