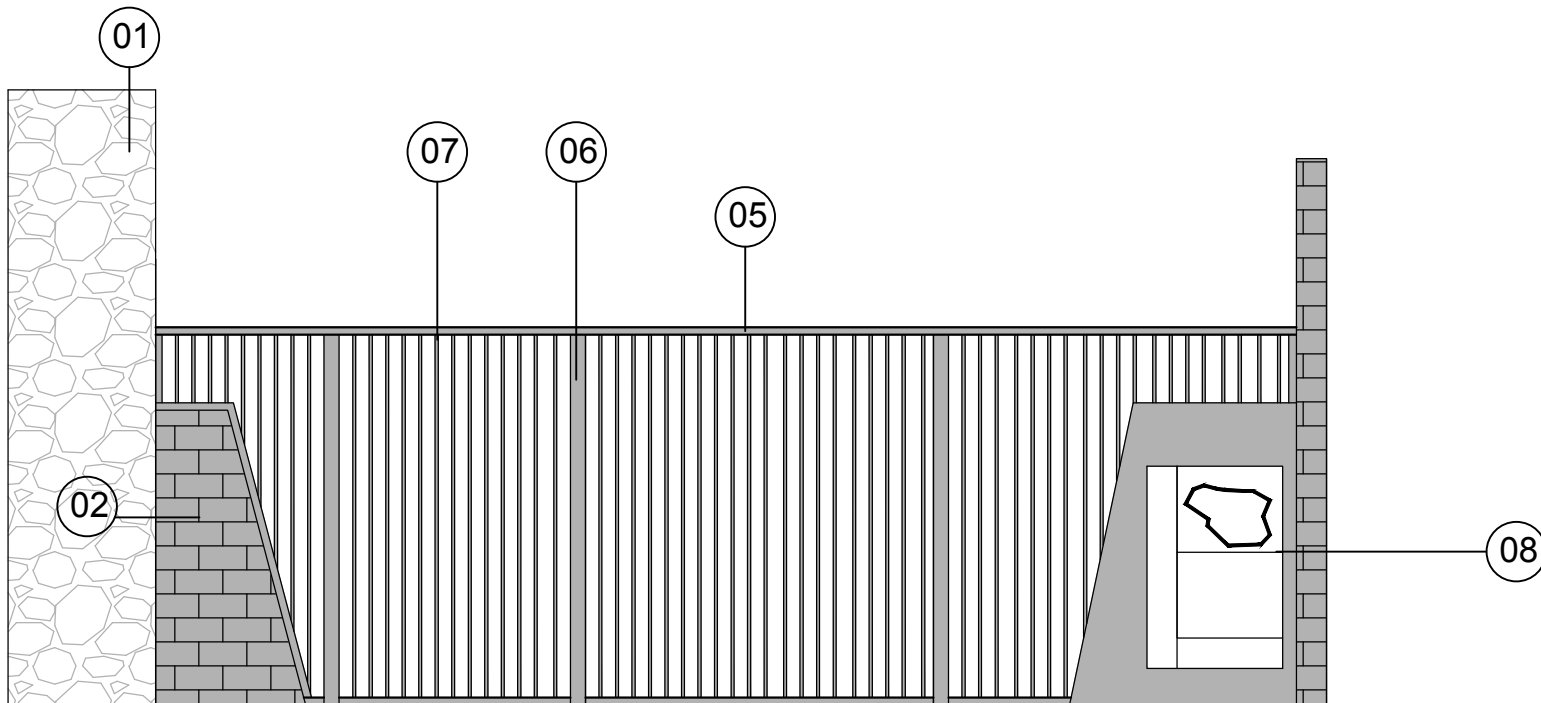
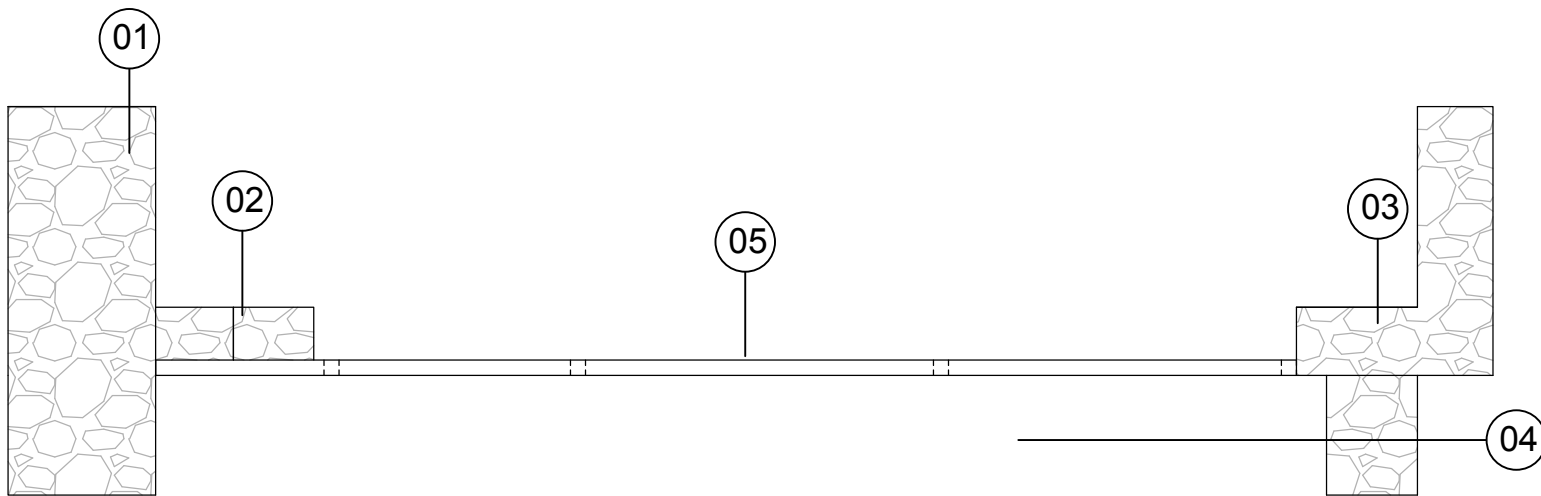


Gate shown in closed position
Plan view

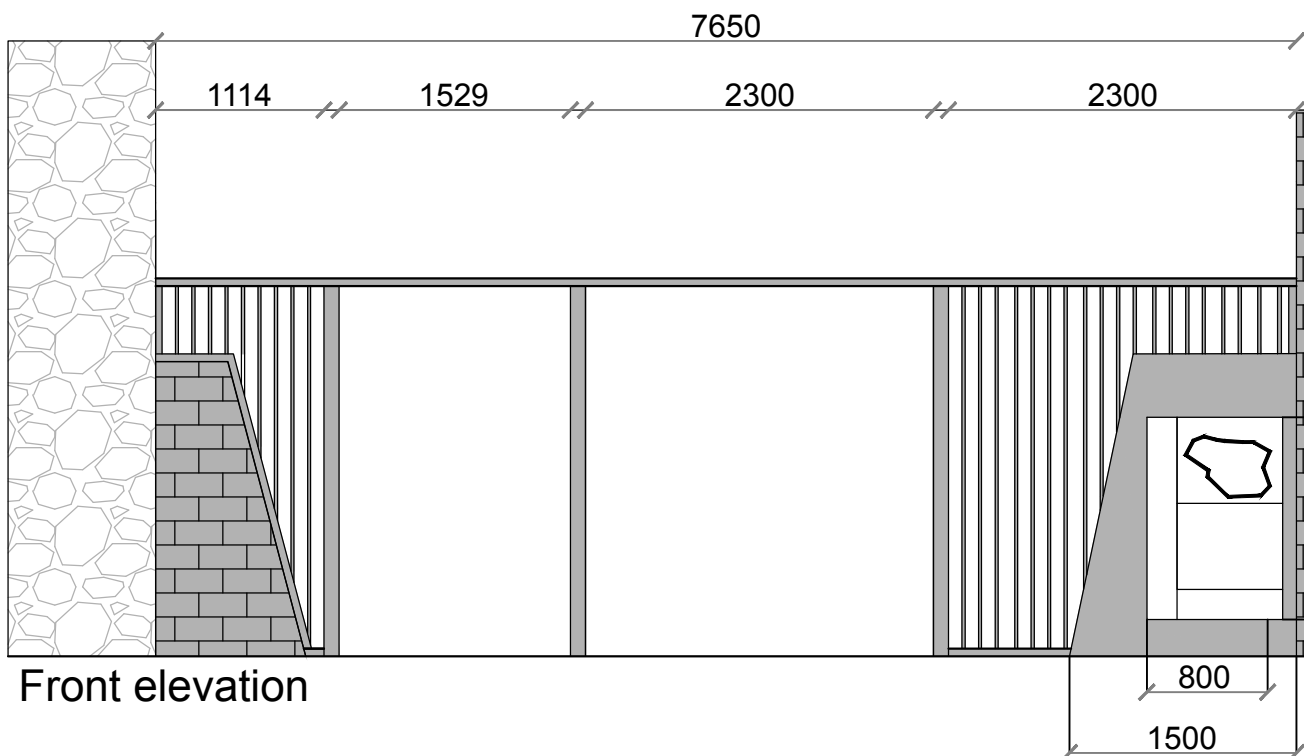
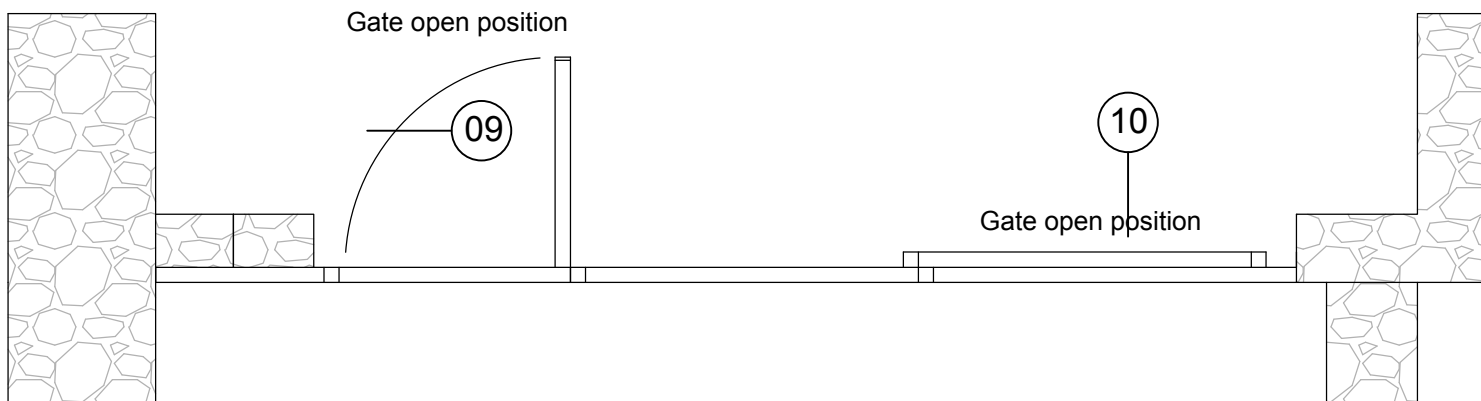
Gate drawings are illustrative only



Existing buttress
aprox dimensions

Front elevation

Gate shown in open position
Plan view



Front elevation

- 01 Existing medieval town walls
- 02 Existing stone buttress
- 03 Existing stone wall
- 04 Burke Street Plaza
- 05 Gate top rail - 50x100mm Powder coated Galvanised Steel
- 06 Intermediate frame: box section steel 100x100, PC Gal Steel
- 07 Intermediate Steel slats 20mm thick, PC Gal Steel
- 08 Signage board and nameplate Dimensions as shown. Powder coated steel
- 09 Hinged gate
- 10 Sliding gate

THIS IS NOT FOR CONSTRUCTION

This drawing is the copyright of the Landscape Architect unless otherwise stated. All dimensions are in millimeters. Where dimensions are not given, drawings must not be scaled and the matter must be referred to the Landscape Architect. If the drawing includes conflicting details/dimensions the matter must be referred to the Landscape Architect. All dimensions must be checked on site. The Landscape Architect must be informed, by the contractor, of any discrepancies before work proceeds.

Cathal O'Meara
Landscape Architects
087 9202549
2Mc Sweeney St,
Fermoy, Co. Cork



Chartered member of the Irish Landscape Institute

Client: Tipperary County Council

Project: East Gate Fethard

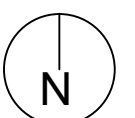
Drawing: Site Landscape Layout LA03 REV01

Date: 03/11/2017

Drawn By: Cathal O'Meara

Issue: Part 8

Dwg No: 1710-LA-P003



Scale 1:50, @ A3