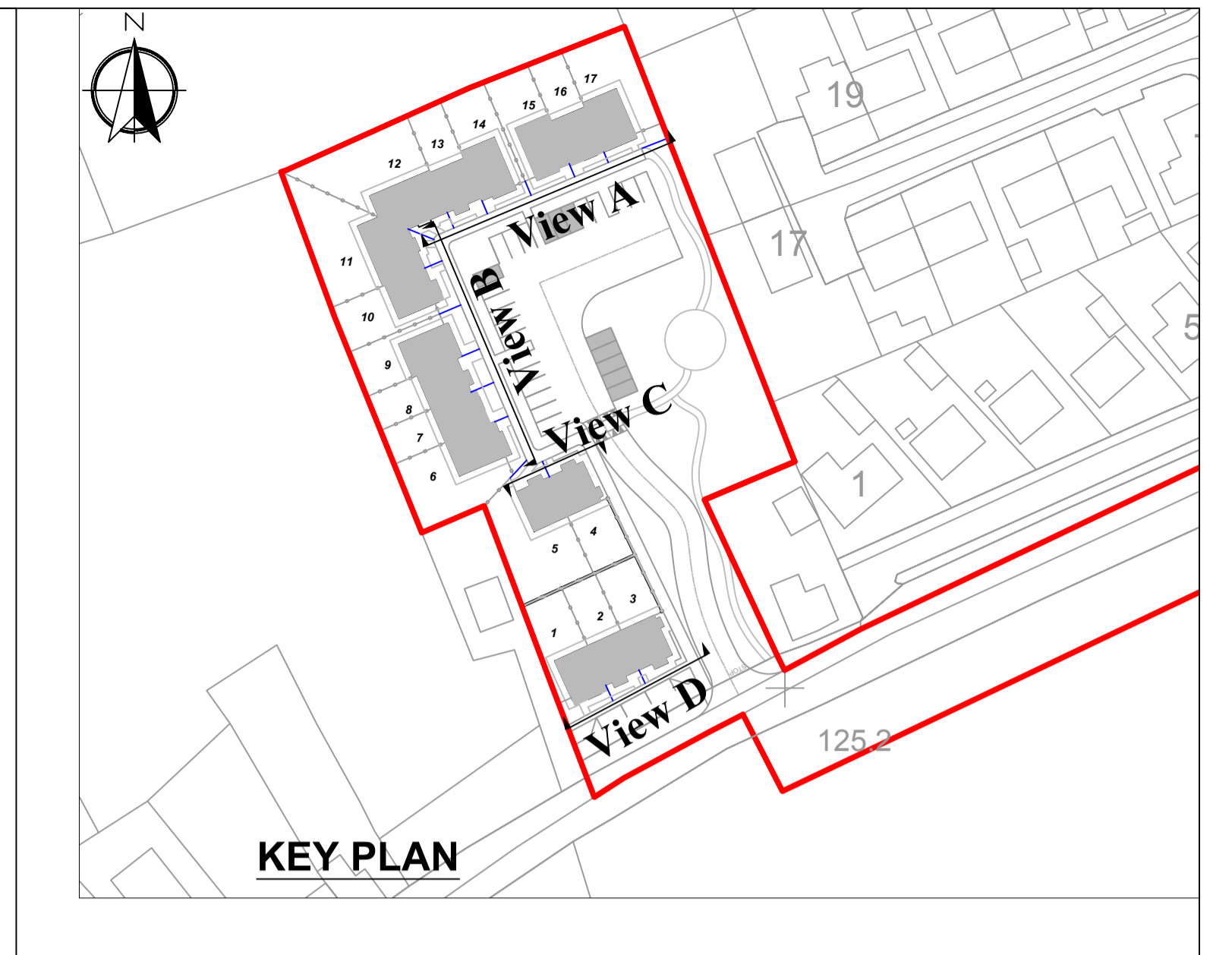
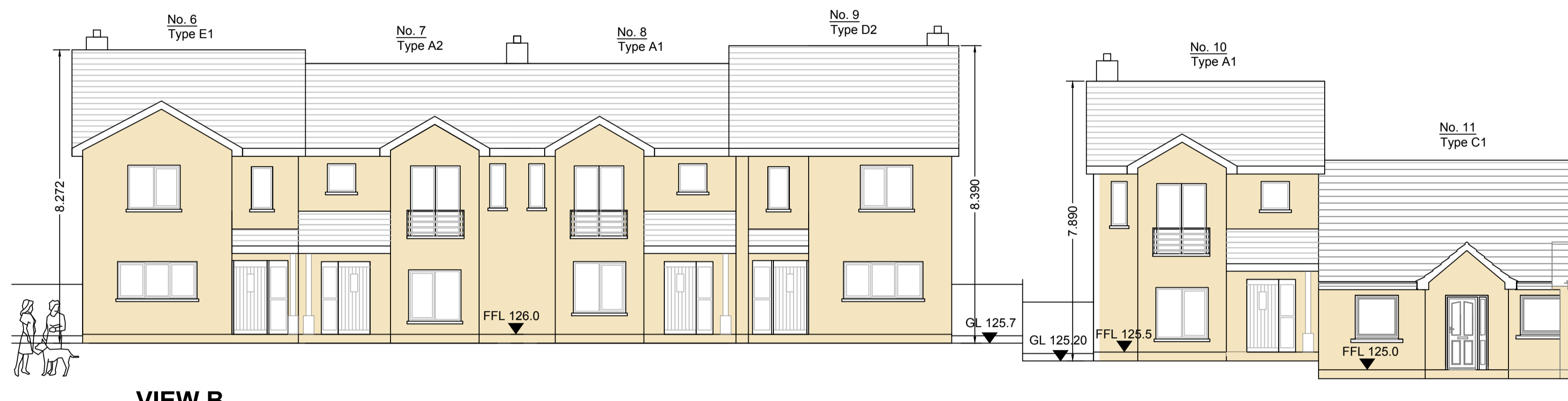


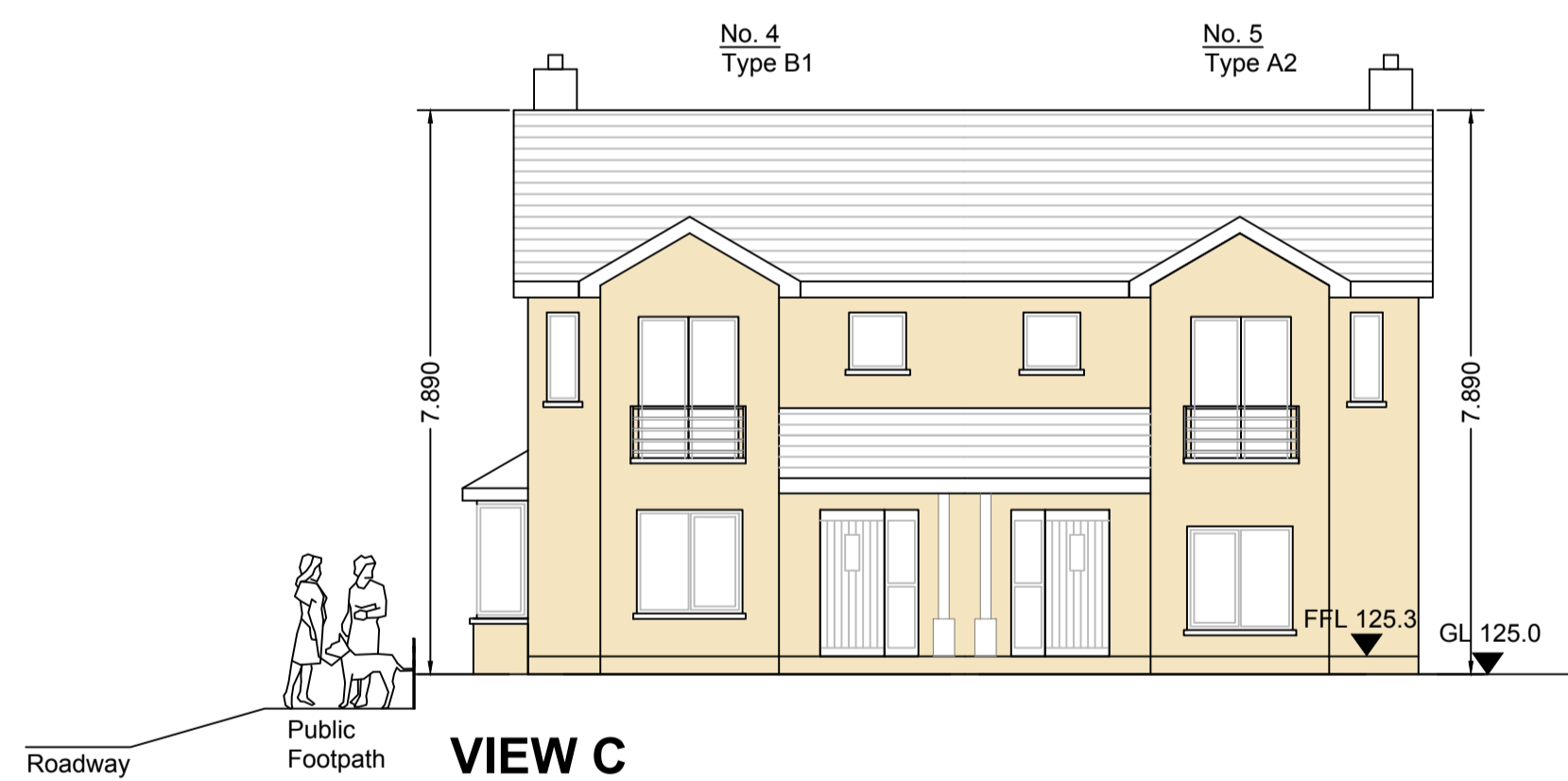
VIEW A



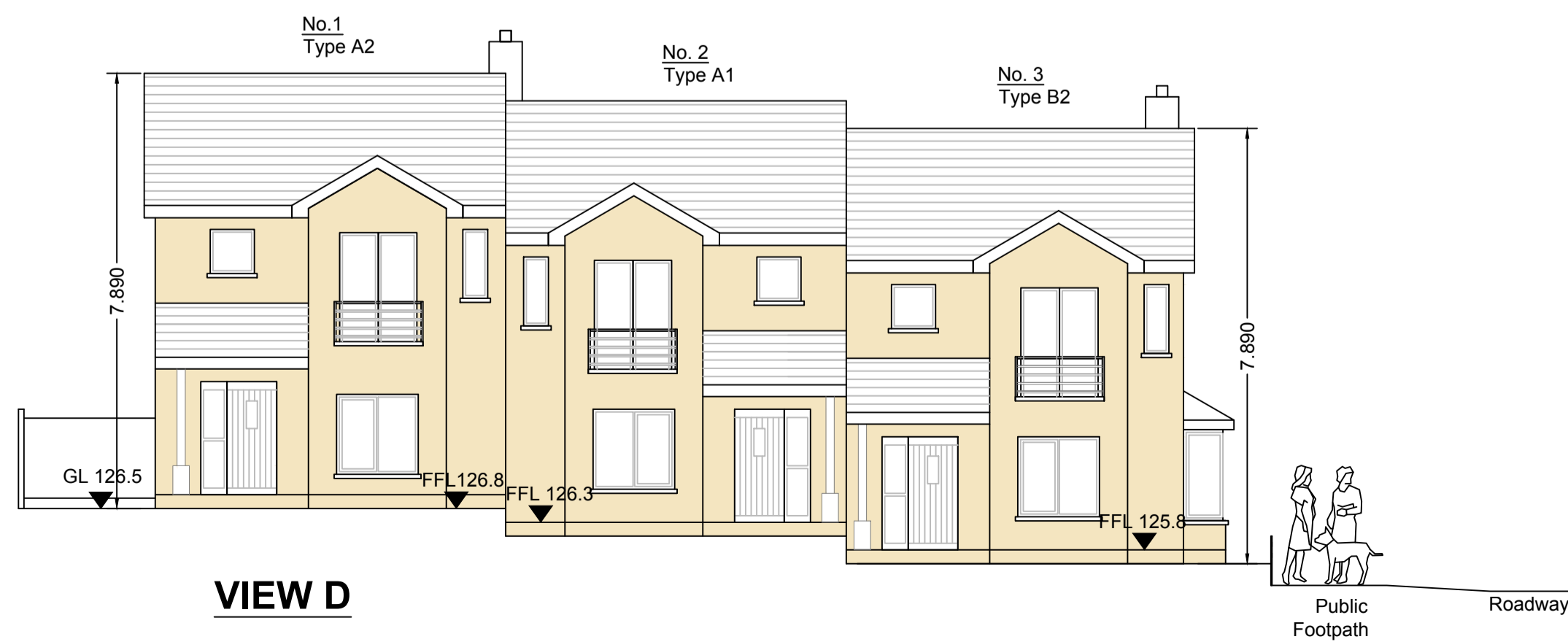
KEY PLAN




VIEW B



VIEW C



VIEW D

REVISION		NO.	DATE	BY
 Comhairle Contae Thiobraid Árann Tipperary County Council				
HOUSING SECTION CIVIC OFFICES, EMMET STREET, CLONMEL, CO. TIPPERARY				
S. CARR DIRECTOR OF HOUSING		L. RYAN SENIOR EXECUTIVE ARCHITECT		
DRAWING TITLE: Part 8 - Proposed housing at Portroe, Nenagh, Co. Tipperary CONTIGUOUS ELEVATIONS				
DRAWN BY: MO'C MAY, 2018	CHECKED BY: LR MAY, 2018	SCALE: 1: 100 @ A1	DWG No: 22/PR/P8/06/01	