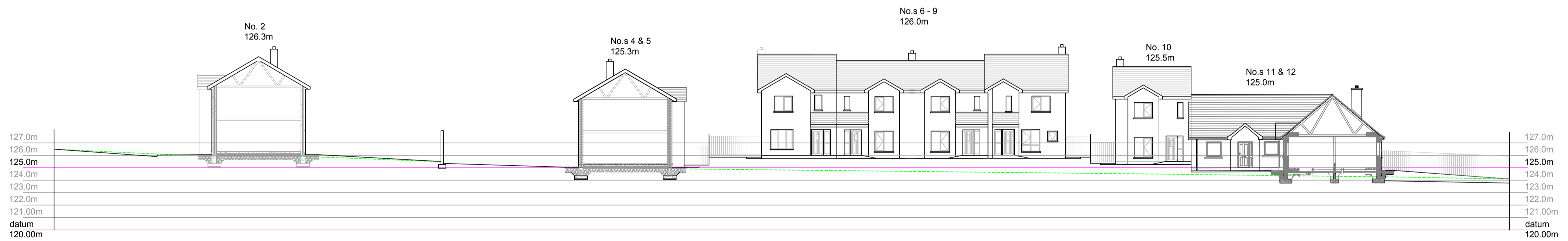
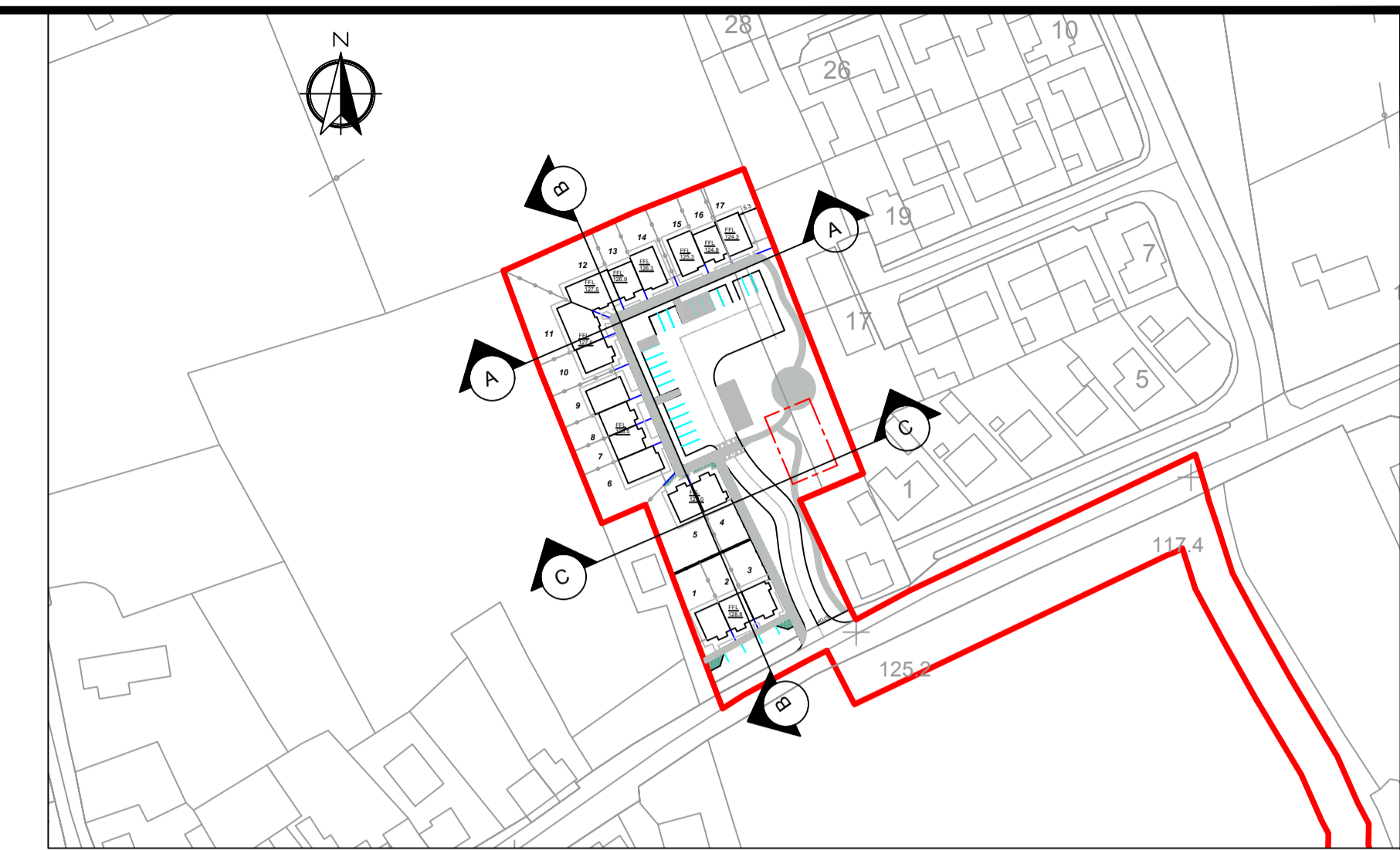


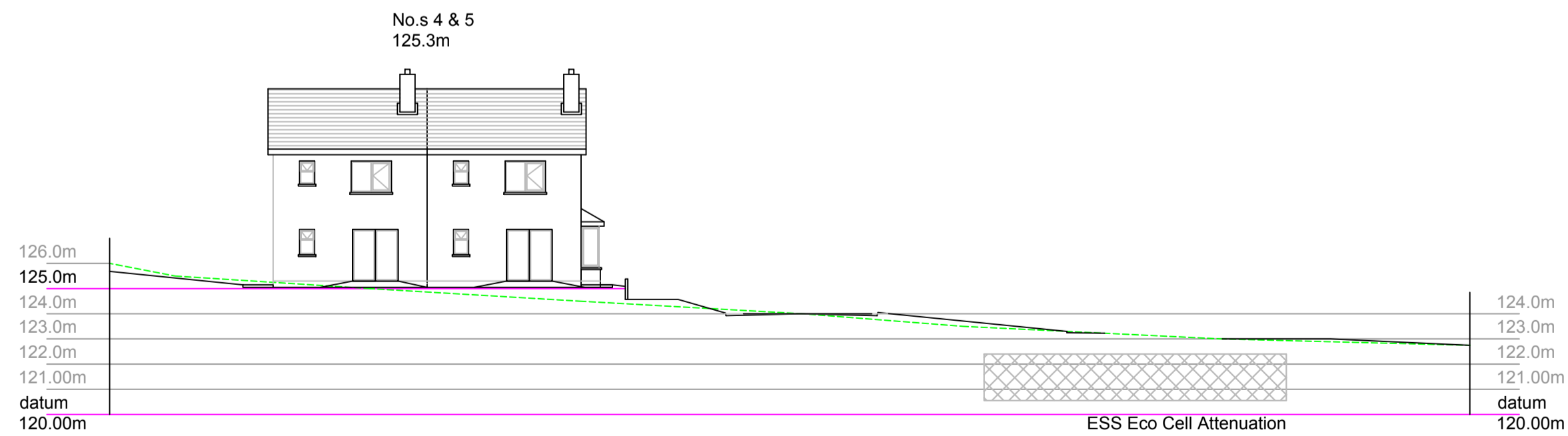
SECTION A-A

Horizontal and Vertical scales 1: 200



SECTION B-B


Horizontal and Vertical scales 1: 200



SECTION C-C

Horizontal and Vertical scales 1: 200

REVISION	NO.	DATE	BY


Comhairle Contae Thibraid Árann
 Tipperary County Council

HOUSING SECTION
 CIVIC OFFICES, EMMET STREET, CLONMEL, CO. TIPPERARY

S. CARR DIRECTOR OF HOUSING L. RYAN SENIOR EXECUTIVE ARCHITECT

DRAWING TITLE
 Part 8 - Proposed housing at Mill Road, Thurles, Co. Tipperary
 SITE SECTIONS

DRAWN BY: MO'C MAY, 2018	CHECKED BY: LR MAY, 2018	SCALE: 1: 100 @ A1	DWG No: 22/PR/P8/07/01
-----------------------------	-----------------------------	-----------------------	---------------------------